



FORT&RRA

A GAME CHANGER FOR 25 YEARS

No single move will win this game—
but together we can make a difference.
Here's some of what Forterra does to
ensure a livable and resilient place for
all future generations.

SUSTAINING OUR REGION

“FIND YOUR PLACE ON
THE PLANET. DIG IN, &
TAKE RESPONSIBILITY
FROM THERE.”

— GARY SNYDER *writer, activist*

AHEAD OF THE CURVE

In 1989, a small group of dedicated volunteers filed papers to begin an organization called Seattle King County Land Trust (later to be called Cascade Land Conservancy and still later Forterra). They had an idea for a new approach to land conservation that bridged the gap between public and private entities. And a mind-set for how this organization would work to sustain our region was established. By challenging the status quo and implementing solutions that include us all, we would shift outcomes and move the needle. Twenty-five years later Forterra's still moving the needle to ensure what we most value in our corner of the world will be here for future generations.

PLAYING TO WIN

WE GET THE JOB DONE

TEANAWAY LANDS

It took 10 years of collaboration and tenacious effort but we got the job done. Forterra, along with our partners, facilitated and completed an historic conservation transaction protecting 50,272 acres in the Teanaway River Valley in 2013. Involving multiple state agencies, this was the largest Washington conservation transaction in more than 45 years and established Washington's first Community Forest—a state agency management model that involves local communities in protection of the forests they love.

235,645

ACRES CONSERVED TO DATE

WE SAVE WHAT MATTERS

Whether in the forest or urban centers, Forterra recognizes the need to conserve more than just museum pieces—that a sustainable region needs a variety of lands to support its inhabitants.

WORKING FOREST INITIATIVE

In the mid-90's Forterra went against the grain and spoke of the need to conserve our working lands—if we conserved only pristine lands we would create islands, while a matrix of land conservation would create resilient ecosystems. This approach led to our Working Forest Initiative and our subsequent goal of protecting one million acres of working forests and farms.

GREEN CITY PARTNERSHIPS

This game changing public-private partnership has built a movement to help create a sustainable network of healthy forested parks and natural areas throughout cities in our region. Through our work with many partners our Green Cities program engages community volunteers to restore public lands in urban areas by removing invasive species and planting native plants and trees.

IN 2013 GREEN CITY PARTNERSHIPS
CLOCKED

120,000

VOLUNTEER HOURS

EQUAL TO 55 FULL TIME EMPLOYEES

OUR JOB WASN'T TO CREATE MUSEUM PIECES OF PRESERVED LANDS.



PLAYING TO WIN

WE DON'T SETTLE FOR 'US' & 'THEM' PARADIGMS— WE'RE ALL IN THIS TOGETHER.

WE LOOK AHEAD

CASCADE DIALOGUES AND THE AGENDAS

A decade ago we recognized that we could have a much bigger impact if we worked together and looked ahead—far ahead. So Forterra engaged with 4,500 of our region's most innovative thinkers and doers to ask them how to ensure a thriving region for future generations.

The outcome? The foundation for Forterra's Cascade Agenda and its subsequent first steps toward the Olympic Agenda, 100-year visions and action plans for sustaining our region's ecosystems, communities, and economies. The Agendas changed the game by linking community and conservation, and setting the focus for our work since then.

WE AIM FOR WIN-WIN

We use a holistic approach and seek opportunities that create wins for all. Forterra supports great ideas from wherever they come and doesn't settle for 'us' and 'them' paradigms—we're all in this together.

CITY OF TUKWILA

Forterra is working with residents of Tukwila to create an enduring, desirable, and equitable community for all its members by convening a wide range of stakeholders to envision, plan, and ultimately build community infrastructure that supports all residents. To date we've supported community planning processes (*Somali Community Services Coalition*), developed and implemented a bridge-building program to connect underrepresented communities to the City (*Community Connectors*), conserved open space (*Duwamish Hill*), and built a community garden (*Namaste*). And we're not done yet!

CONSERVATION PROJECTS BY LANDSCAPE



THIS PAST YEAR WE MET WITH OVER

1,500

RESIDENTS REGARDING COMMUNITY
DEVELOPMENT ISSUES

WE GET CREATIVE

LCLIP (THE LOCAL CONSERVATION AND LAND INFRASTRUCTURE PROGRAM)

Conceived and developed by Forterra and passed into state law in 2011, this game changing program combines the real estate tool known as Transfer of Development Rights (TDR) with a financing option for cities that creates incentives for both land conservation and community support investment. The outcome is conservation of the farms, forests and natural areas we treasure and rely on, combined with the much-needed financing for municipalities to fund plazas, sidewalks, bike lanes, and more to ensure our cities will be vibrant, attractive places to live and work.



FORTERRA ENTERPRISES

We know that to achieve large scale regional sustainability there must be economic benefits for all. So we established Forterra Enterprises to demonstrate market-leading development strategies that realize a fair economic return while conserving land, restoring natural functions, and contributing to local quality of life —leading edge development and conservation projects that show the way to sustainability.

THE LCLIP PROGRAM IS EXPECTED TO CONSERVE

250,000 ACRES OF FARM & FOREST

AND GENERATE NEARLY

\$30 MILLION

IN ADDITIONAL REVENUE FOR COMMUNITY INFRASTRUCTURE IN SEATTLE ALONE

ENSURING THAT EVEN WITH GROWTH AND INCREASED DENSITY, OUR CITIES WILL BE VIBRANT AND HEALTHY.



STUDYING THE FIELD

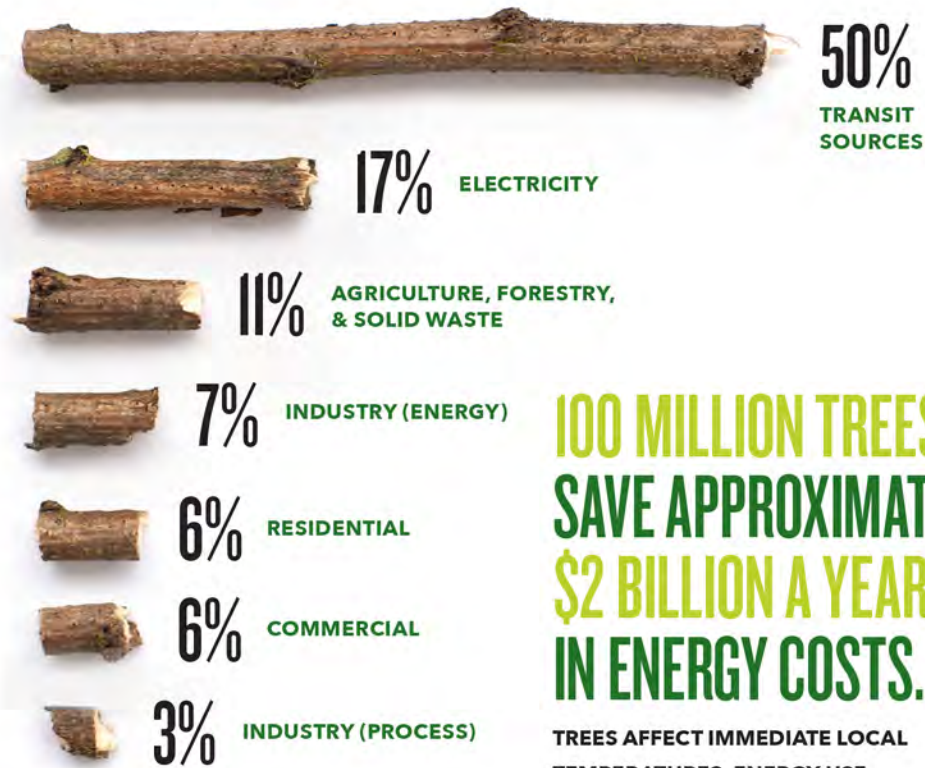
25 YEARS AND BEYOND

Nimble and ever-adapting, Forterra is poised to continue changing the game for another 25 years and beyond. And though it's difficult to predict exactly what the future holds, we study the trends to shape our work moving forward—it's the only way to stay ahead of the curve.



WE NEED TO
ACT URGENTLY,
COLLABORA-
TIVELY, AND
EQUITABLY.

GREENHOUSE GAS EMISSIONS IN THE CENTRAL PUGET SOUND REGION



Source: Vision 2040, Puget Sound Regional Council, December 2009

1.5°

FAHRENHEIT
AVERAGE ANNUAL TEMPERATURE RISE

IN THE LAST CENTURY THE AVERAGE ANNUAL TEMPERATURE IN THE NORTHWEST HAS BEEN RISING...

WITH INCREASES UP TO 4 DEGREES FAHRENHEIT

CHANGES IN SNOWPACK, STREAMFLOWS, & FOREST COVER ARE ALREADY OCCURRING. FUTURE CLIMATE CHANGE WILL LIKELY CONTINUE TO INFLUENCE THESE CHANGES.

Source: United States Global Change Research Program, Global Climate Change Impacts in the United States, 2009

WASHINGTON'S POPULATION IS EXPECTED TO INCREASE 31% BY 2040.

AS THE STATE'S HUMAN POPULATION CONTINUES TO GROW, MORE FISH AND WILDLIFE SPECIES WILL BE PUT AT EVEN GREATER RISK BY LOSS AND FRAGMENTATION OF CRITICAL HABITAT, DISTURBANCE AND INTRODUCTION OF NON-NATIVE SPECIES.

Source: Washington State Office of Financial Management | Puget Sound Regional Council, Vision 2040, December 2009

THIS GROWTH IS DRIVEN BY



Source: Washington State Office of Financial Management



PEOPLE WHO USE PARKS AND OPEN SPACES ARE

THREE TIMES MORE LIKELY TO ACHIEVE RECOMMENDED LEVELS OF PHYSICAL ACTIVITY THAN NONUSERS.

Source: Puget Sound Regional Council, Vision 2040, December 2009



FROM 1995–2013 NATIONAL TRANSIT RIDERSHIP ROSE 37%

EXCEEDING THE 20% GROWTH IN POPULATION AND THE 23% INCREASE IN VEHICLE MILES TRAVELED.

Source: APTA 2013 Ridership Report, American Public Transportation Association

CITY DWELLERS' CARBON FOOTPRINT IS JUST

HALF THE SIZE OF THE NATIONAL AVERAGE.

Source: Cool Climate Network, University of California, Berkeley

EACH YEAR,

ONE ACRE OF TREES ABSORBS THE CARBON PRODUCED BY DRIVING A CAR 26,000 MILES.

Source: North Carolina State University College of Agriculture and Life Sciences, Department of Horticulture, Trees of Strength.



1 ACRE

ABSORBS

26,000 MILES



FOR THE FIRST TIME SINCE 1910, SEATTLE IS GROWING FASTER THAN ITS KING COUNTY SUBURBS,

REVERSING A 100 YEAR TREND

Source: US Census Bureau 2013



BETWEEN 2000 AND 2050

EXPANDING URBANIZATION WILL SUBSUME 5.3% OF THE FOREST LAND THAT REMAINS IN THE UNITED STATES.

A TOTAL OF 29.2 MILLION ACRES OF FOREST LAND—

ABOUT THE SIZE OF PENNSYLVANIA

Source: Projected Urban Growth (2000–2050) and its Estimated Impact on the U.S. Journal of Forestry, December 2005

FORTERRA

PLAYING ON



THERE IS MORE WORK TO DO.

For 25 years Forterra has stayed ahead of the curve and we're not stopping now. We will continue to act urgently, collaboratively, and equitably. And we will continue to evolve as is necessary to stay ahead of the curve. But the constant core of our work will remain the same—the care of our communities and the safeguarding of our natural resources.

“THE GOOD
POSSIBILITIES THAT
LIE AHEAD ARE ONLY
THOSE THAT WE MAY
MAKE OURSELVES,
BY A WISER AND MORE
GENEROUS AND MORE
EXACTING USE OF
WHAT WE HAVE LEFT.”

— **WENDELL BERRY** *author, The Long-Legged House*

PLAYING ON

COMMUNITY

The key to an enduring region is vibrant, equitable and affordable communities. Forterra focuses our efforts where we can fundamentally improve the outcomes by bringing our skills and resources to bear in our work with local communities and partners. This includes engaging community members at Equity Summits in Tacoma and South King County, instituting policy to transform the Central Issaquah area into a walkable community with parks, open space and affordable housing options, and helping the Seattle Opera establish a new green urban rehearsal and scene stage that serves the entire community.

WE HAVE ENGAGED IN A
MEANINGFUL WAY WITH OVER

81

COMMUNITIES IN
OUR REGION

WE FOSTER GREEN AND EQUITABLE COMMUNITIES THROUGH:

- ACHIEVING COMPACT DEVELOPMENT WITHIN A CITY'S EXISTING FOOTPRINT
- LAND BANKING AND REDEVELOPMENT BY TRANSIT AND TOWN CENTERS FOR HOUSING
- ENSURING EVERYONE HAS A VOICE IN COMMUNITY PLANNING
- CONSERVING AND RESTORING COMMUNITY OPEN SPACES AND PARKS
- ENABLING ACTIVE, NON-MOTORIZED TRANSPORTATION & HEALTHY FOOD ACCESS
- SETTING UP DEVELOPMENT INCENTIVES TO GENERATE PUBLIC BENEFITS
- CREATING NEW INFRASTRUCTURE FINANCING TOOLS
- SUPPORTING RURAL COMMUNITY ECONOMIC DEVELOPMENT

OUR APPROACH WITH COMMUNITIES:

ENVISION IT,
SUPPORT IT, ALLOW IT,
FUND IT, BUILD IT



PLAYING ON

LANDSCAPE

LANDSCAPE SCALE PROJECTS

Conservation efforts must continue to ensure our region maintains natural and working lands that support the health and well-being of all our inhabitants. At Forterra we use a wide angle approach, considering local economies, biodiversity, geodiversity, and the health and social benefits of the environment. The result: conservation that takes into account the human elements of the landscape. We will continue to build on the work we've started in the Kitsap Forest and Bay and the Teanaway River Basin.

JUST THIS YEAR

535 ACRES

1.5 MILES OF SHORELINE

WERE CONSERVED AS PART OF THE
KITSAP FOREST AND BAY EFFORT



TO MAINTAIN THE HEALTH OF ALL OUR LANDS REQUIRES ONGOING MANAGEMENT AND CARE.

STEWARDSHIP AND RESTORATION

It is easy to think that all the forests, rivers, and creeks in our communities will be here forever. But the fact is they won't be. In our cities alone we will lose the majority of our urban forests over the next 50 to 100 years if we don't continue existing restoration and stewardship efforts. To maintain the health of all our lands requires ongoing management and care. And doing stewardship and restoration work with communities not only gets this job done but instills an ethic of stewardship that pays far into the future, resulting in healthy habitats and healthy, sustainable communities.

Forterra is on it, restoring and maintaining our urban parks through our Green Cities program, stewarding our conserved lands in 12 counties, and restoring riparian and floodplain habitat along the Cedar and Duwamish Rivers—all the while continuously evaluating more ways to grow our impact.

STEWARDSHIP

15,000 ACRES

OF FORTERRA OWNED PROPERTIES AND
CONSERVATION EASEMENTS ACROSS
OUR REGION

7,300 ACRES

OF PUBLIC FOREST AND NATURAL AREA
PARKLAND THROUGH GREEN CITIES

PLAYING ON

BRINGING IT ALL TOGETHER

THE CORRIDORS INITIATIVE

In a given geography, we ask how we can address the important connections between people and land, and work to revitalize all our communities—bridging the gaps between city and rural town, working lands and wild lands. This initiative invests in the enhancement and sustainability of the lands and communities along our great natural corridors—Highway 2/Great Northern Railway, the Yakima River Canyon Scenic Byway, and segments of the Peninsula's Highway 101.

CITIES FOR ALL INITIATIVE

We use our expertise in land—negotiation, acquisition, land banking—to help communities gracefully accommodate new growth and create a high quality of life for their diverse residents. Through our work with cities, landowners, and community partners we envision new uses for land in community hubs and partner with financial institutions and developers to build healthy, green mixed-use projects, especially by transit and town centers.

THE NEXT WAVE OF OUR AGENDAS

Over the last 10 years climate change, demographic shifts, technology, growing economic inequities, and unpredictable market forces have altered how we live. How will these changes impact our work to ensure a sustainable region? Is our approach meeting the challenge? Forterra has begun the process of crafting the Next Wave of the Agendas, due for completion in May 2015—we're always working to stay ahead of the curve.

OUR WORK ON THESE INITIATIVES SUPPORTS FIVE OUTCOMES:

- AN ENGAGED COMMUNITY
- ECONOMIC DEVELOPMENT
- LAND CONSERVATION
- INCREASED ACCESS TO NATURAL AREAS
- RESTORATION OF COMMUNITY GREEN SPACES



WE'RE ALL IN THIS TOGETHER

Step up the game by getting involved—become a member, volunteer your time at an event, advocate for important issues—you choose.

Go to www.forterra.org/get_involved

MAIN OFFICE

901 Fifth Avenue, Suite 2200
Seattle, WA 98164
206-292-5907
www.forterra.org

CENTRAL WASHINGTON OFFICE

409 North Pine Street
Ellensburg, WA 98926
509-962-1654

SOUTH SOUND OFFICE

1119 Pacific Avenue, Suite 1300
Tacoma, WA 98402
253-274-5673



Designed in kind by Hum Creative
Photographs by Cariua Skrobecki
©Forterra 2014