

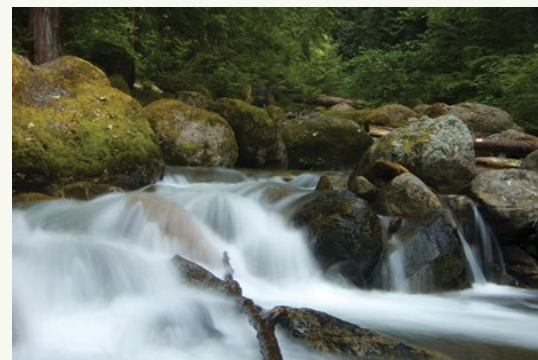
celebrating
one
REGION
one
FUTURE



FORT&ERRA
2012 ANNUAL REPORT

contents

3	Message from the President
4	What We Do
5	Our Vision
6	Our Lands
8	Our Communities
10	The Year by the Numbers
11	Looking Forward
12	Map
14	Leadership
15	Donors
21	Steward Lists
23	Financials



message from the PRESIDENT



There is an alchemy to this business of making the promises the Cascade and Olympic Agendas real—or at least a mixology. Guided by these action plans, we conserve great lands and help build strong neighborhoods with a wonderfully strong brew of dedicated employees, superb board and a deeply engaged and supportive community of donors, partners, sponsors and volunteers. Together we are creating a sustainable and durable region that is worthy of our children and will serve us into the next century.

With your support in 2012, we advanced the Cascade and Olympic agendas and conserved thousands of acres of land across seven counties. They ranged from a two acre park addition along the Duwamish River in Tukwila to a 1,850 acre forestland property around Riffe Lake in Pierce County. We worked with tribes such as the Makah Tribe to increase walking and biking opportunities at Neah Bay and the Quinalt Indian Nation to move the Taholah village out of a tsunami zone. We partnered with local communities including Federal Way where we developed a cutting edge urban farm program and Ocean Shores where we co-developed an award winning Complete Streets policy to make streets safe for people of all ages and abilities to walk, bike or drive. Over 25,000 volunteers have worked side-by-side with our Stewardship team for 120,000 hours to restore parks, greenspaces, shorelines and forestland around the region. The Green Cities Network welcomed its newest city with the launch of the Green Everett Partnership. All this sums to a region that cares about its communities and families along with the environment and economies.

The seeds we planted and nurtured in 2012 should bear fruit this year. We laid important groundwork for transformational projects that, with further persistence, may be completed in 2013. The Kitsap Forest and Bay Project will conserve nearly 7,000 acres of forestland and two miles of shoreline around Port Gamble Bay. Cities around the region are investigating the use of the Landscape Conservation and Local Infrastructure Program, a groundbreaking tool that provides much needed infrastructure funding for communities while conserving farm and forestland. Seattle will be the very first to adopt the Program as part of its South Lake Union rezone project. We may even complete a major project on the East side of the Cascades to conserve tens of thousands of acres of habitat and recreation land. Working together, 2013 should be a year of great accomplishments.

The Cascade and Olympic Agendas do not really call for alchemy and certainly not rocket science. They are advanced by the partnership that we have deepened over the years with each of you. Together we are transforming our region and providing an invaluable legacy for our children and families yet to come. Thank you for your generous and consistent support.

A handwritten signature in black ink, appearing to read 'Gene Duvernoy'. The signature is fluid and stylized, with a large, sweeping 'G' and 'D'.

Gene Duvernoy, President

what
WE DO

182,000 ACRES

of forests, farms, shorelines parks
& natural areas conserved



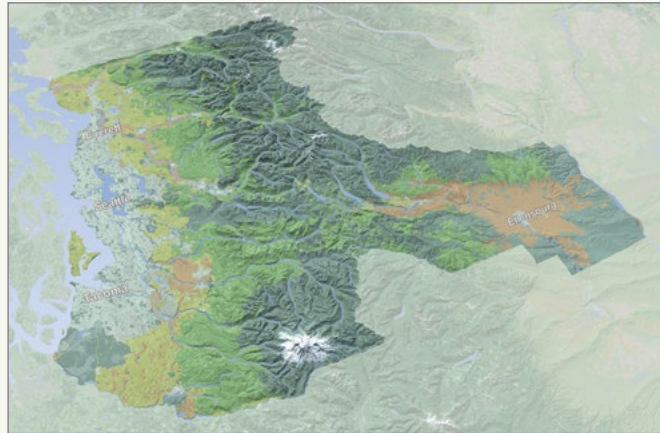
Forterra fills a unique niche as the largest community building and conservation organization dedicated to this region. We are shaping a future in which our environment and economies will flourish.

We partner with leaders and residents across the region to create healthy, livable and prosperous communities. For over 20 years, Forterra has led efforts to conserve more than 182,000 acres of forests, farms, shorelines, parks and natural areas and restore critical landscapes.

We are advancing a new approach to conservation to protect land on a scale never before seen. We encourage broad collaboration across all sectors; balance environmental, social and economic needs; and emphasize the link between vibrant cities and healthy lands. Recognizing the need for a holistic approach to the challenges created by our tremendous population growth, we advance pragmatic solutions with policy, land transactions, community engagement, environmental stewardship and more. Our work is grounded in market-based approaches with the understanding that economic vitality and environmental protection are both critical to maintaining our region's quality of life for the next 100 years.

CASCADE AGENDA

The Cascade Agenda is a 100 year vision and immediate action plan for the lands and communities of our region. It is based on the input of thousands of residents across our region and offers pragmatic solutions to the challenges and opportunities created by our tremendous population growth. The Cascade Agenda's collective vision is grounded in the belief that a broad coalition can achieve fundamental change.



It is a balanced approach to conservation and community building that encourages collaboration across all sectors and considers environmental, social and economic needs. The Cascade Agenda brings together business, civic and government leaders to accomplish two big goals:

Our Lands: Protect 1 million acres of working forests (93% of existing timberland) and farms (85% of current agricultural lands) and 265,000 acres of shorelines, natural areas and parks.

Our Communities: Maintain our rural economies and way of life and enhance the vibrancy and livability of our cities and towns.

Since we began developing the Cascade Agenda in 2004, we have collectively secured 217,960 acres.

OLYMPIC AGENDA

The Olympic Agenda is an emerging conversation with the residents of the Olympic Peninsula to shape a future of great communities and healthy landscapes. Forterra is working with residents, organizations and businesses of the Peninsula to create a 100-year vision and immediate action plan for the lands, communities and economy of Clallam, Grays Harbor, Jefferson and Mason Counties. Drawing on the experience of creating The Cascade Agenda, Forterra will identify and help implement strategies that will provide a non-regulatory guide to conservation and community growth.



our LANDS

Forterra has conserved over 182,000 acres of forests, farms, shorelines, parks and natural areas to date. We are responsible for stewarding over 15,000 acres which we accomplish with help from dedicated volunteers who help remove invasive plant species, plant native species, monitor and more. These are a few conservation and stewardship highlights from 2012.



CONSERVATION

Triple Creek Ranch | Forterra and Kittitas County conserved the 260-acre Triple Creek Ranch, the largest farmland conservation easement to date in Kittitas County. Triple Creek Ranch is a working farm with high quality riparian habitat, water rights, important wildlife corridors and historic family ownership. In 2007, landowners Roma and Vernon Stokes approached Forterra with a request to help them stave off the constant offers from developers wanting to subdivide their property for rural residential development. With the easement in place, the longtime family-owned farm outside of Ellensburg, WA can continue its agricultural operations in perpetuity. The work was funded by grants from Washington Wildlife and Recreation Program and the National Resources Conservation Service.

Riffe Lake | Thanks to Forterra's negotiations, Tacoma Power purchased a conservation easement from landowners Pope Resources on a 1,850 acre property containing working timberland and valuable wildlife habitat in the area known as Peterman Hill above Lewis County's Riffe Lake. This transaction involves Pope Resources' timberland directly adjacent to Tacoma Power's 6,840 acre Peterman Ridge wildlife unit which will both be managed by Washington Department of Fish and Wildlife. This conservation easement is especially important because the newly protected lands lie between Riffe Lake and the existing wildlife area, leveraging its conservation benefits to the adjacent Tacoma Power property.

Buckley Forest Preserve | The Buckley Forest Preserve is a 203-acre forested property that lies just south of the City of Buckley. It is home to a variety of wildlife, provides groundwater storage, and is a popular respite for the community living nearby. The effort to conserve the Preserve began with David and Gay Santerre who live near the forest and wanted to prevent its development. The Santerres contacted Forterra, who in turn worked with Pierce County and Plum Creek Timber Company to purchase the land with funding from Pierce Conservation Futures for permanent conservation. Forterra facilitated the transaction and Pierce County now owns the land.



North Bay Estuary | The North Bay Natural Area Preserve is a 1,215 acre area containing some of Washington's best estuarine and freshwater habitat. Forterra helped the Washington Department of Natural Resources purchase a 119 acre addition to the Preserve in December. North Bay is located on the north side of the vast Grays Harbor Estuary, two miles east of Ocean Shores. This unique coastal wetland is a mosaic of freshwater wetland, sphagnum bog and bog forest, and a coastal marsh community. In addition, North Bay NAP contains a portion of a forested coastal berm, estuarine scrub-shrub habitat and a variety of upland second growth forest communities. The preserve is the premier site of its kind in both the Grays Harbor and Willapa Bay estuary complexes.

Innovative Conservation Tools | Market-based conservation is key for achieving the goals of the Cascade Agenda. Transfer of development rights (TDR) programs have been a centerpiece of this strategy over the past several years and our progress in this area continued in 2012. Over the past year Forterra had a role in the creation or expansion of three TDR programs across the region: Tacoma, Mountlake Terrace, and Snohomish County.

There are currently 20 TDR programs in Washington State, of which Forterra has played a role in the creation or expansion of 12.

STEWARDSHIP

Restore the Duwamish Shoreline Challenge | Inspired by the efforts of BECU employees who independently began restoration work on over 10,000 square feet of shoreline along the Duwamish River, Forterra, the City of Tukwila and BECU launched the Restore the Duwamish Shoreline Challenge. The goal is to restore 150,000 square feet of riverbank along almost 1.5 miles of the Duwamish River. The Challenge aims to get other Tukwila businesses involved by volunteering at restoration work parties, donating money or both.

Cedar River | Since 2003, Forterra has partnered with Seattle Public Utilities, King County, Friends of the Cedar River Watershed, landowners and many volunteers to complete a large-scale restoration of the lower Cedar River. The river contains some of the best remaining aquatic habitat in the greater Lake Washington watershed. In 2012, Forterra planted 22,000 native trees and shrubs on public and private lands, hosted 17 volunteer events and worked with 23 landowners to install habitat restoration plantings on their riverfront properties.



our COMMUNITIES

Forterra recognizes that by creating great communities in which people choose to live, work and raise their families, we can protect rural working and natural lands from sprawling development. We work with leaders and residents to help make our cities and towns more sustainable, livable places with everything from advancing public policy to volunteering in local parks.



EPA Community Assistance | Thanks to funding from the Environmental Protection Agency's Building Blocks for Sustainable Communities Grant, Forterra had the opportunity to assist six communities across Washington. We helped the Quinault Indian Nation and the Makah Tribe, and the Cities of Federal Way, Tukwila, Issaquah and Kirkland to craft and implement programs and policies to help advance their community building objectives.

- **Moving a Village:** Forterra worked with the Quinault Indian Nation to engage the community and tribal staff in visioning around moving the lower Taholah village above the tsunami inundation zone. Moving from their traditional lower village to an elevation above the tsunami inundation zone is an essential step to ensuring long-term sustainability of the tribe.
- **Farming in Federal Way:** The City of Federal Way has a burgeoning urban agriculture movement that is, in part, a response to a lack of access to fresh produce many residents face. But, the City did not have many formal urban agriculture policies in place to deal with people's questions about farming in their communities. Forterra and Federal Way gathered community input to help inform new city-wide urban agriculture policies that will help make it easier for Federal Way residents to farm.
- **Biking and Walking in Neah Bay:** The Makah Tribe wants to help improve their community's health by making it easier to walk and bike in the town of Neah Bay. We designed and led walking and biking audits in town, facilitated community conversations, and provided Tribal leaders recommendations for walking and biking improvements they can make.





Ocean Shores Complete Streets | Forterra worked with the City of Ocean Shores and community members, business owners and other stakeholders to craft a Complete Streets ordinance to help make their roads safer for all users, foster economic development and to connect their tourist areas and waterfront main business district. The work was funded by a grant from the National Endowment for the Arts. In addition to education and engagement, we drafted language for their ordinance. Ocean Shores adopted the new ordinance in December 2012 and it was recognized as the 4th best Complete Streets policy in the country in April 2013. Pictured right is an example of what complete streets can look like.



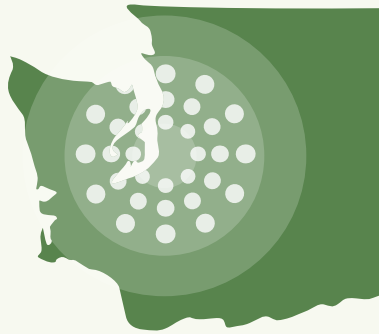
Central Issaquah Plan | 2012 marked the culmination of years of work on a vision to redevelop the central Issaquah Valley. The plan is to transform the mostly strip-malls and parking lots along I-90 into a walkable community with parks and open space and housing affordable to a wide range of residents. Forterra engaged the community, met with city leaders, testified to City Council and more.



Green City Partnerships | This was a banner year for the Green Cities Network. Volunteers logged over 107,000 hours of work time across all six Green Cities. We launched the Green Everett Partnership, the first Green City in Snohomish County. A member of our Green Seattle Partnership team coauthored Seattle's Forest Ecosystem Values report, a multi-year research project on the economic value of urban forests and we continued efforts to expand our programming outside of park boundaries to city streets through the Tree Ambassadors program.



BY THE numbers



20 conservation
projects totaling

4,159
acres

bringing
Forterra's protected
total to 181,961 acres

120,000

volunteer hours = 55 full time employees



23 WORKSHOPS IN 11 COMMUNITIES: *to mobilize residents to participate in
shaping the future of their cities and towns*



Forterra has been involved with

ALL 12 TDR
PROGRAMS

that have been created or
expanded in Washington since the
launch of the Cascade Agenda,
including 3 in 2012.



123,632

*native plants and trees
planted by Forterra,
our partners and the
Green Cities Network*

looking FORWARD

Forterra's work continues to grow and evolve to meet the needs of the community and the region. This year laid the foundation for transformational conservation projects that will not only protect, but help shape the character of this great region. The Kitsap Forest and Bay Project is a landscape-level effort to conserve nearly 7,000 miles of forestland and two miles of shoreline around Port Gamble Bay in North Kitsap. The Teanaway River Valley project could conserve 50,000 acres of critical forestland in central Washington. As one might imagine, each one of these transformational projects is complex and long range. They involve community members, nonprofits, business owners, farmers, foresters and many local, state and in some-cases federal partners. There are many moving pieces to negotiate and the work is difficult, but the pay-off—protecting the forests and farm lands and shorelines that make this region so spectacular—is worth it.

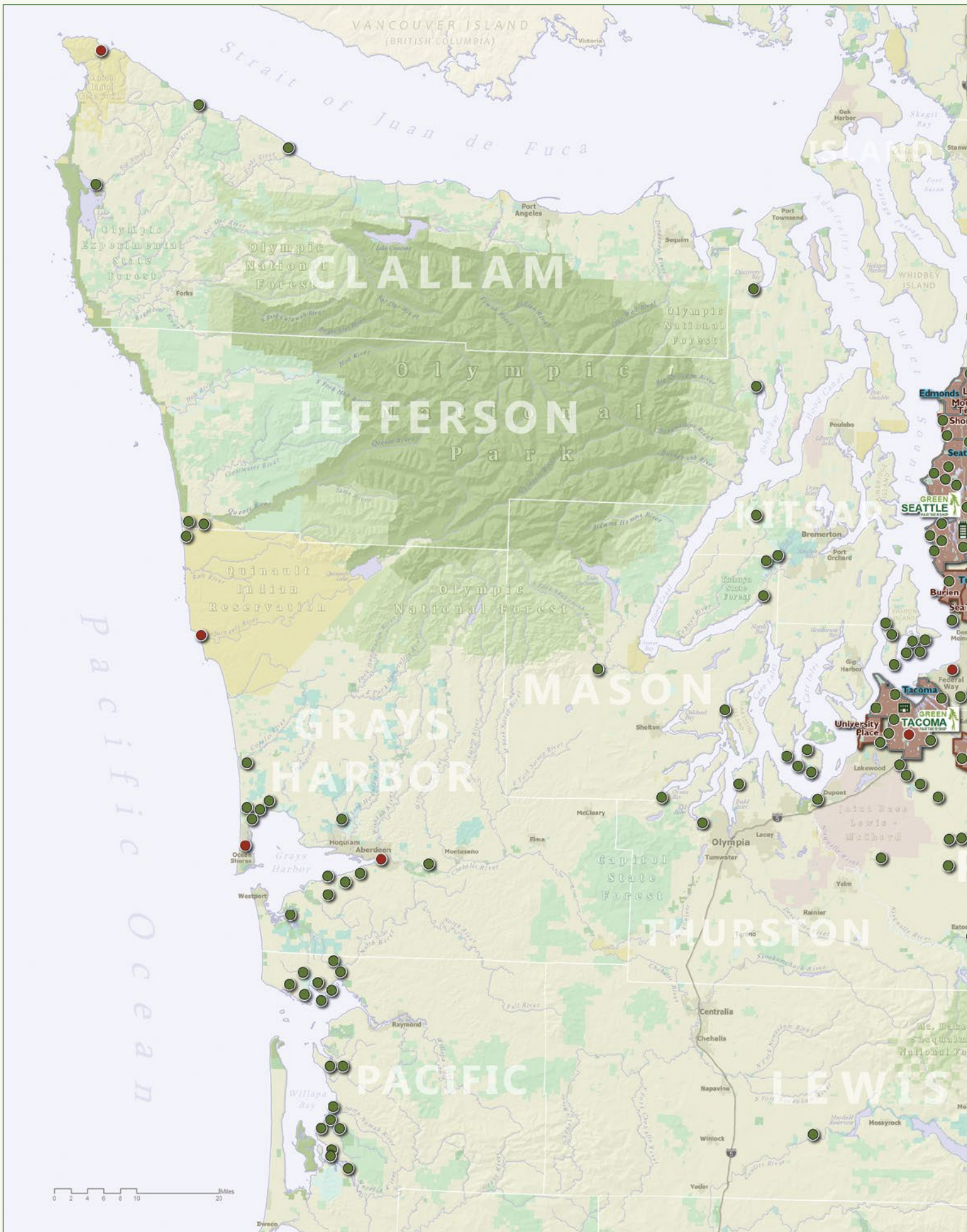
We have known for years now that if we want to conserve our lands, we must create communities in which people chose to live, work and raise their families. Our venture into community work began with the Green Seattle Partnership's city park restoration. Attractive and accessible parks and green space are, after all, an important element for quality communities. Since then, our communities work has expanded dramatically. We're advocating for thoughtful urban redevelopment that will attract residents, not deter them and perpetuate sprawling development. We are working directly with city leaders to help them plan and prepare for growing populations and community members to help them negotiate how they can play a role in their neighborhood's future. Our efforts range from supporting community gardens and urban agriculture to promoting Complete Streets and equitable transit oriented development. As we move forward, Forterra

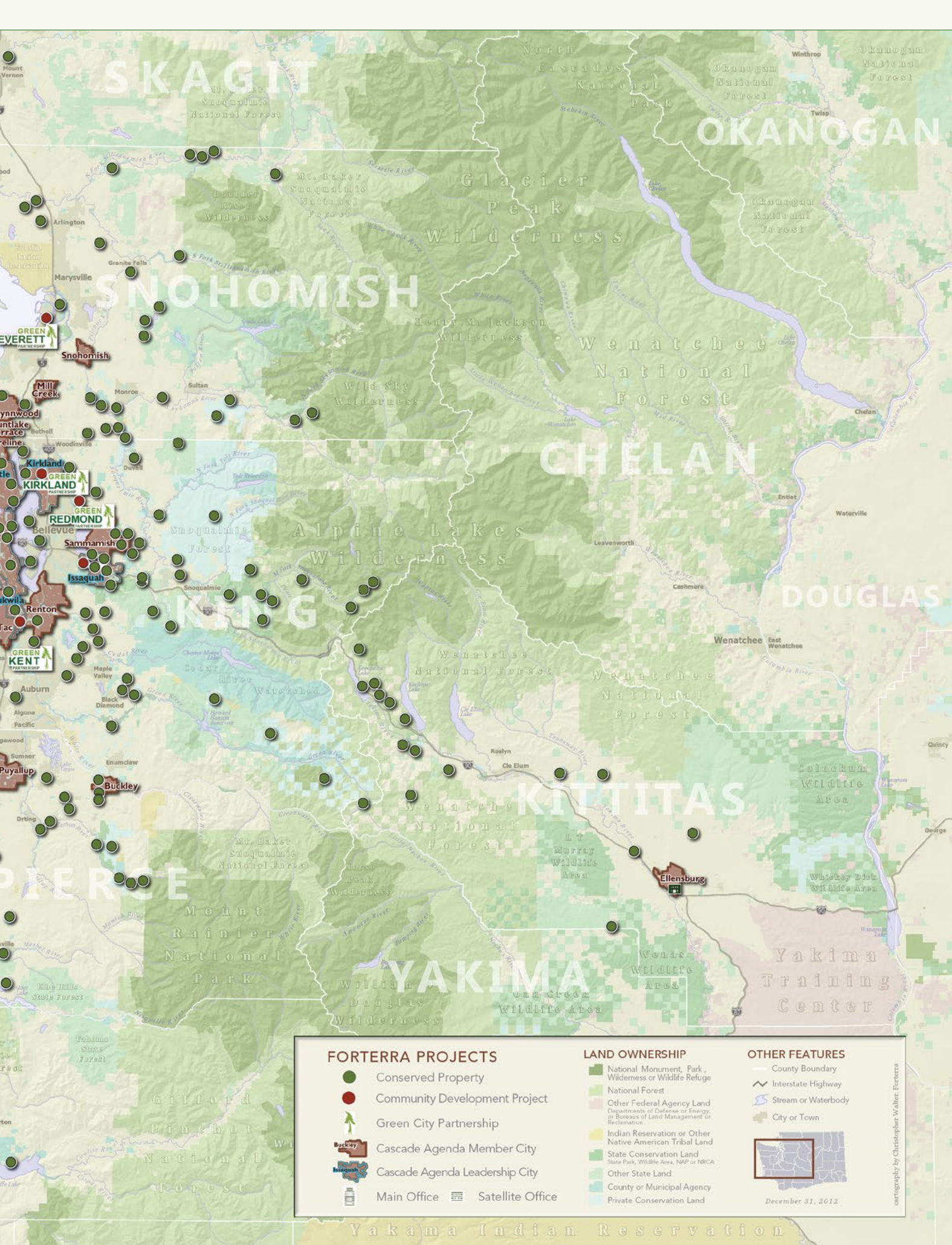


is exploring how our expertise in real estate transactions can play a role in creating livable, affordable, connected neighborhoods through urban development projects.

And though our conservation work is increasingly complex and we continue to invest in communities work, we remain rooted in our traditional land transactions. In 2012, our conservation projects ranged from two to 1,850 acres. The traditional tools of conservation remain critical to our mission and we will always value the conservation of a few acres of parkland, a small family farm, and the other details that make this region one of the absolute best in the world.

The goals of the Cascade and Olympic Agendas are ambitious. It is no small task to conserve 1.3 million acres of land across the region while creating sustainable economies and communities. But as we move forward, Forterra continues to adapt to the challenges of the region to create a future worthy of our children, grandchildren and generations beyond.





FORTERRA PROJECTS

- Conserved Property
- Community Development Project
- Green City Partnership
- Cascade Agenda Member City
- Cascade Agenda Leadership City
- Main Office
- Satellite Office

LAND OWNERSHIP

- National Monument, Park, Wilderness or Wildlife Refuge
- National Forest
- Other Federal Agency Land (Departments of Defense or Energy, or Bureau of Land Management or Reclamation)
- Indian Reservation or Other Native American Tribal Land
- State Conservation Land (State Park, Wildlife Area, NAP or NRCA)
- Other State Land
- County or Municipal Agency
- Private Conservation Land

OTHER FEATURES

- County Boundary
- Interstate Highway
- Stream or Waterbody
- City or Town



December 31, 2012

cartography by Christopher Walker, Forterra

FORTERRA leadership

BOARD OF DIRECTORS

Officers

Jim Greenfield | Chair, Davis Wright Tremaine
Bert Gregory | Vice Chair, Mithun Architects,
Designers Planners
A-P Hurd | Treasurer, Touchstone Corporation
Patti Case | Secretary, Green Diamond Resource
Company
Peter Orser | Immediate Past Chair,
Weyerhaeuser Real Estate Company

Members At Large

Patrick Callahan | Urban Renaissance Group, LLC
JJ Collins | Freestone Real Estate LLC
TJ DiCaprio | Microsoft Corporation
Gene Duvernoy | President, Forterra
Nicole Faghin | Washington Sea Grant
Lisa Graumlich | University of Washington
Greg Johnson | Wright Runstad & Company
Tom Luce | Inveris Partners, LLC
Terry Mutter | The Boeing Company
Ken Myer | Vantage Point
Greg Nickels | Step Up Mobile
Dan Nordstrom | Outdoor Research
Thomas O'Keefe | River Advocate
Frank Pritchard | Emeritus Board Member
Natalie Quick | Natalie Quick Consulting
Floyd Rogers | Open Space Advocate
Joe Sambataro | Labor Ready Inc., Retired
Broderick Smith | Urban Visions
Marilyn Strickland | Mayor, City of Tacoma
Bill Taylor | Taylor Shellfish
Aaron Toso | Gallatin Public Affairs
Dave Towne | Towne Planning Services
Ruth True | NuBe Green
Doug Walker | WRQ, Founding Partner
Andy Wappler | Puget Sound Energy
Ron Whitener | UW School of Law

ENTERPRISES BOARD

Steve Ohlenkamp, Chair
Gary Young
Hal Ferris
Jim Greenfield
Jim Reinhardson
Rod Brown
Tom Goeltz

LEADERSHIP TEAM

J. M. Allen, Managing Member, Allen &
Company, LLC
René Ancinas, President and CEO, Port Blakely
Companies
Sam Anderson, Executive Officer, Master Builders
Association of King & Snohomish Counties
Rod Brown, President, Washington
Environmental Council

Patrick Callahan, Founder and CEO, Urban
Renaissance Group, LLC
Patti Case, Public/Regulatory Affairs Mgr., NW
Timberlands Div., Green Diamond Resource Co.
Bob Drewel, Former Snohomish County Executive
Rick Dunning, Executive Director, Washington
Farm Forestry Association
Gene Duvernoy, President, Forterra
Joni Earl, CEO, Sound Transit
Billy Frank, Jr., Chairman, Northwest Indian
Fisheries Commission
Jerry Franklin, Program Director, College of
Forest Resources, University of Washington
Jay Gordon, Executive Director, Washington
State Dairy Federation
Stone Gossard, Pearl Jam, Community Leader
Denis Hayes, President and CEO, Bullitt Foundation
Ada Healey, Vice President of Real Estate, Vulcan
Real Estate
John Howell, Partner, Cedar River Group
Gerry Johnson, Partner, Pacifica Law Group LLP
Kate Joncas, President, Downtown Seattle
Association
Ron Judd, Public Policy Advisor
Martha Kongsgaard, Chair, Puget Sound
Partnership; President, Kongsgaard-Goldman
Foundation
Colin Moseley, Chairman, Green Diamond
Resource Company
Norman Rice, Vice Chairman, Capital Access,
Former Mayor of Seattle
Charles Royer, President, Institute for Community
Change; Former Mayor of Seattle
Bill Ruckelshaus, Former Chair, Puget Sound
Partnership; Former EPA Administrator
Bob Santos, Former Executive Director, Interim &
Former Regional Director of HUD
Neelima Shah, Program Officer, Bullitt Foundation
Ron Sher, Metrovation
DeLee Shoemaker, State Government Affairs
Director, Microsoft Corporation
Craig Ueland, Former President and CEO, Russell
Investment Group
Tay Yoshitani, CEO, Port of Seattle

EMERITUS/

Maryanne Tagney Jones, Co-Chair
Bruce Williams, Co-Chair

TRUSTEES

King County
Thomas O'Keefe, Chair
Brooke Alford
Mark Boyar
Crystal Carter
Wally Costello
Nona Ganz

Carolyn Hope
Craig Krueger
Doug McClelland
Harry Morgan
Dave Russell
Chuck Wolfe
Janet Wall

Kittitas County

Jim Armstrong
Jim Briggs
Kirk Holmes
Jim Huckabay
Jeff Jones
Kelly Larimer
Jason Smith
Tami Walton

Mason County

Patti Case, Chair
Jean Farmer
Bob Hager
Tom Hamilton
Terri Jeffreys
Brian McGinnis
Dan O'Neal
David Overton
Dawn Pannell
Bob Simmons
Bill Taylor

Pierce County

Aaron Toso, Chair
Bruce Beckett
Katrina Bloemsmma
Ione Clagett
Tom Galdabini
Ronald Hendry
Kris Kauffman
Ian Morrison
Nancy Pearson
Monty Smith
Herb Stumpf
Derek Young
Allen Zulauf

Snohomish County

Nicole Faghin, Chair
Jay Goodwin
Linda Neunzig
Allison Raduziner
Scott Schreffler
DJ Wilson



THANK you

CONTRIBUTIONS FROM JAN. TO DEC. 2012

Conservation Circle Patrons (\$10,000 and above)

Alan Black Family Fund
American Foundation
Barrett Family Foundation
The Boeing Company
Boeing Employees Credit Union
Bullitt Foundation
Patrick Callahan and
Karen Kilbane
Davis Wright Tremaine LLP
Doug and Maggie Walker Family
Foundation
Gene Duvernoy and
Carolyn Madsen
EJW Jr. Tukwila Yard LLC
Forest Foundation
Donald and Kathleen Gould
Pete Higgins and Leslie Magid
HomeStreet Bank
HSBC
Gerry Johnson and Linda Larson
Klorfine Foundation
Kongsgaard-Goldman
Foundation
Holly and Randall Lyman
Nick and Leslie Hanauer
Foundation
Dan and Amy Nordstrom
Peter and Laura Orser
Outdoor Research
Pearl Jam
Plum Creek Timber Company
Pope Resources
Frank Pritchard
Puget Sound Energy
REI, Inc.
Ron and Eva-Maria Sher
Steve and Liann Sundquist
Maryanne Tagney Jones and
David Jones
Taylor Shellfish Farms
The Giles W. and Elise G. Mead
Foundation
The Russell Family Foundation
Triple Creek Ranch Properties,
LLC
The Trust For Public Land
Joseph Vance and
Sara Throckmorton
Weyerhaeuser Family Foundation
Wildlife Forever Fund

Conservation Circle Guardians (\$5,000 - \$9,999)

American Forest Land Company,
LLC
CleanScapes
Stone Gossard
Bert Gregory
Gull Industries, Inc.
Carl Haeffling and Pam Johnson
Hancock Timber Resource Group

Juniper Foundation
Karr Tuttle Campbell
Jim and Eileen Kelley
King County
Microsoft Corporation
Jeannie and Bruce Nordstrom
Olympic Resource Management
Pacifica Law Group
Beth and Wade Perrow
Polygon Northwest
Port Blakely Companies Inc.
Quadrant Homes
Rowley Properties, Inc.
David and Gay Santerre
Seattle City Light
Storm INTL
Lyn Tangen and Richard Barbieri
Norm Tjaden
David and Chris Towne
Ruth and Bill True
Ueland Foundation
Vitalogy Foundation
Vulcan Inc.
Whole Foods Market Westlake
Wright, Runstad & Company
Yarrow Bay Holdings

Conservation Circle Trustees (\$2,500 - \$4,999)

James Apa
Paul and Debbi Brainerd
Caroline H. Carroll
Matthew Cohen and Kim Kemp
The Commerce Bank of
Washington
Michelle Connor and
Mark Levensky
Tamara DiCaprio
Emily Hall Tremaine Foundation
Florence B. Kilworth Foundation
Greater Metro Parks Foundation
Green Diamond Resource
Company
John Howell and Claire Powers
A-P Hurd and Josh Binder
Greg Johnson
Konrad Liegel and Karen Atkins
Master Builders Association of
King and Snohomish Counties
Terry and Gina Mutter
Ken and Laurie Myer
Dan and Diane O'Neal
Pacific Portfolio Consulting
Prairie Foundation
Natalie Quick
RREEF America
Susie Russell Hall
Salser Family Foundation
Joseph and Judy Sambataro
Save Our Seawall
Schnitzer Steel Industries
Rob Short and Emer Dooley
Sallie Teutsch
University of Washington College
of Built Environments

Vanguard Charitable Endowment
Program
Washington Realtors®
Manny and Sarah Weiser
Bruce Williams and Gro Buer
Grant and Frances Woodfield

Conservation Circle Advocates (\$1,000 - \$2,499)

Alente' Spa Salon
Allen & Company, LLC
J and Sandra Allen
Alliance for Community Trees
Dick and Katie Ambrose
Jerome Arbes and Anne Knight
Paul Balle
Tom Barghausen
Bentall Kennedy
Rob Bernard
Joe Blattner
Sarah Blocki
Jabe Blumenthal and Julie
Edsforth
Bonney-Watson
Betty Bottler
Toby Bright
Pauline Cantor
Cedar River Group
Timothy Y. Ceis
Cherry Street Coffee
City of Issaquah
City of Seattle Parks and
Recreation
City of Seattle
Rick Cocker
Kelly Cole and Jon Tinter
JJ and Jonine Collins
Combined Federal Campaign
Elizabeth Davidow and
Michael Ford
Matt Deasy
Denny Miller Associates Inc.
Cheryl and Greg Dietzel
Molly and Talmage Edman
Jeni Ellison
Environ International Corporation
Jim and Gretchen Faulstich
Ellen Ferguson
Hal and Carolyn Ferris
Susan and Scott Freeman
Gallatin Public Affairs
Jodie Galvan and Antonio Galvan
Nona and Ulrich Ganz
Daniel Grausz and Clare Meeker
Virginia and George Gunby
Ann Gygi and Eric Jolley
Tom and Mary Louise Hager
Heartland LLC
Andy and Freeman Held
Jeanette L. Henderson
Jerry and Linda Henry
Hillis Clark Martin & Peterson P.S.
Jerry Hillis and Diana Gale
William and Marlene Jenkins
Cindy Jennings

Sally and Warren Jewell
Mark and Lynne Johnsen
Craig Johnson
Mike and Peggy Kanaga
Mark Kane
Matt and Sara Kellogg
Giyen Kim
King County Parks & Recreation
Kittitas Environmental Education
Network
Laird Norton Tyee Company LLC
Bruce Leader
Mire Levy
Lucky Seven Foundation
Teresa Macaluso and
John Cochran
Martin Smith Inc.
Medsker Refrigeration
Merrill & Ring, Inc.
Miller Nash, LLP
Robert and Karen Miner
Mithun
Sara and Jeffrey Moorehead
Raymond Mosher
Mark and Christine Nagle
Chris NeVan
Elliott Norse
Roger Nyhus
Randolph and Shellie Oakley
Steve and Sally Ohlenkamp
Aaron and Andrea Ostrovsky
Nancy and Don Pearson
Dale Pedersen
Perkins Coie
Bryce Phillips
Port Gamble S'Klallam Nation
Dixie Jo and Tom Porter
Joanne M. Roberts
Floyd and Judy Rogers
Steven Rogers and Shelly Hall
Brian and Kim Ross
Charles Royer and Lynn Claudon
William and Jill Ruckelshaus
Seabrook Community Foundation
Seattle Mariners
Bonnie Shaughnessy Smith
Sierra Nevada Brewing Co.
Paul Silver and Christina Marra
Patricia Smith
Sound Transit
Starbucks Coffee Company
Allan and Diane Steinman
Jeffrey Stern
Stoel Rives LLP
Stream Real Estate LLC
Dick and Hope Stroble
The Student Conservation
Association, Inc.
Bill and Betsy Taylor
The Balint Family
Jeffrey Tilden and Robin Silver
Touchstone Corporation
Martha Tucker
United Way of King County

THANK you



University of Washington College
of the Environment
Urban Visions Sustainable
Real Estate
Uwajimaya Inc.
Van Ness Feldman GordonDerr
Thomas Vessella
Andy Wappler
Washington Forest Protection
Association
Washington State Combined
Fund Drive
Erin and Mike Welch
Weyerhaeuser Company
Foundation
Whole Foods Market
Robert Yerkes

Preservationist Members (\$500 - \$999)

Eric Aagaard
W. Ron Allen
Jean and Russell Amick
Sidney S. Andrews
Donna and Matt Bellew
William and Mary Black
Mark Boyar and Gretchen
Weitkamp
Paul and Laurie Bride
Rodney Brown and Cathie Conolly
Barbara Christoffersen
City of Seattle Combined
Charities
Diane Clark
Bryan Cohen
Combined Federal Campaign of
South Puget Sound
Compass General Construction
Jeffrey Cook
Christine Cooley
Maud and Marc Daudon
John W. Davis
John Delbridge
Jay and Gaynelle Derr
Jeremy Downs
Mary and Jim Dunnam
Earth Share of Washington
Daniel Ederer
Paul and Christine Eisenberg
Chris Endresen
Enumclaw Forested Foothills
Rec. Assoc.
Nicole Faghin and David Spence
Joe and Carole Faltermeier
Mike Flood
Gerard and Sakiko Flower
Jerry and Phyllis Franklin
Ray Gastil
Stan Gent and Susan Morrow
Robert Girvin
Bryan Glynn
Matthew and Pia Graves
Karen Guzak and Warner Blake
Thomas F. Haensly
Mark and Ann Hamburg
Katlin Hanson
Anders Hejlsberg
Jan Hendrickson
Robert and Phyllis Henigson
Bill Heston
Patricia Hickey O'Brien and
Edward O'Brien
Larry Hood
Bill Horder
Michael Howe
Kenneth Johnsen and Stacy
Graven
Robert and Vera Johnsen
Debbie and Dean Johnson
Ron and Margo Klein
Ted Koehn
KPFF Consulting
Peter Kuttel
Melissa and Aaron Laird
Richard Low
Dave Mann and Ellen Witebsky
James and Casey Margard
Chris Martin
Kathleen Masterson
Mike Melancon and Glenn
Johnson
Mike Miller
Gregory and Sharon Nickels
Thomas C. O'Keefe and
Rie Yamazaki
Richard J. Omata
John and Priscilla Privat
Cynthia Putnam
Linda J. Pym
Chip A. Ragen and Tina Ragan
RE-SOLVE
Stephen Rimmer
Matthew Roberts and
Wady Milner
Faith A. Roland
George Rolfe
Casey Roloff
Alexander Schofer and
Sahale Little
The Schuster Group, Inc.
Dave and Vergia Seabrook
Seattle Shellfish
Seattle Sounders
Jeffrey Seely
John Sheu
Laurie Snider
Sternoff LP
Skip Swenson
Stephen Tan
Anna Thurston
John and Jane Titland
UBS Wealth Management
Tim Vinopal and Evelyn Vinopal
Ed and Cynthia Weber
Debbie Wege
Christopher and Sherryl Dee
Wilson
Fran and Bunny Wood
Debbie C. Young and
Bruce Dunlop
Gary and Lark Young

Steward Members (\$250 - \$499)

Douglas and Susan Adkins
Andrew Albrecht

Chris Allison
Kermit and Danna Anderson
Sue Anderson
Lyle and Betty Appleford
Jim and Liahna Armstrong
James Austin
Gregory and Sandra Bader
Robert and Alma Bass
Julia Bent
Bob and Cindy Blais
Jane Blodgett
Doug and Nancy Boyden
Bob Breen
Wray and Dorothy Buck
Michael Carlson
John Caulfield
Georgios Chrysanthakopoulos
Ione and John Clagett
Robert H. Cline
Brian Collins-Friedrichs
Conard Romano Architects
Brenda Cooper
Steven and Rebecca Cooper
Judy and William Courshon
Maureen Cowley
Sophia Danenberg
Karen Daubert and Jared Smith
Joel DeJong and Mary DeJong
Peter Dewey and Marian Valentine
Rick and Polly Dodd
Kris Draper
Dunn & Hobbes LLC
Kristine Edwards
Clyde and Arlene Elkinton
Elliott Family Charitable Fund
Richard and Diane Elliott
Lowell Ericsson
Dan Ervin
Mary and Raymond Ferguson
Steve Fisher and Jude Fisher
Mick Fleming
Mario and Joanna Flores
Bart and Esme Freedman
Terry and Linda Gardiner
Alden Garrett and Charlie Eriksen
Vanessa Gemmell
Ira and Courtney Gerlich
Rick and Nancy Gervais
Robert Gipe
Susan Golub and Paddy Freeman
Jim Graham
Jim and Kathleen Greenleaf
Hans Griem and Michelle Oh
Matt Griffin
Carol and Peter Hickner
Glen Hiemstra
Delney and Gil Hilen
Rodney Hines
John Hoedemaker
Harry Hoffmann and Wendy Jans
Stephen Holt
Eric Holtz and Jean Guth
Carolyn Hope and Paul Hope
Matt Hough
Russ Howell
Jim and Diane Huckabay
Mark and Mollie Huppert
Bruce and Gretchen Jacobsen

Hugh James
Scott Jenkins
Deborah Jensen and Steven
Malloch
Dorothy Johnson
Karen Johnson
Lee Ann Johnson
Carla Kaatz
Lisa Keeney McCarthy
Keeney's Office Supply
Keith Kemp
Killin' Time Ranch, LLC
Craig Kinzer
Judd Kirk
Frederick Klein
Jim Kodjababian and Maria
Denny
Ken Krivanec
Yvonne Kuperberg
Howard Langeveld
Bill and Molly LaPatra
Patricia A. Leach and Stephen M.
Roberts
Daniel C. Lee
Marcia Lewis
Scott Lockert
Ross and Lisa Macfarlane
Del MacKenzie
Cassie Maloney
Kelly Mann and John Kealey
Bob Martin
Colleen and William McAleer
Joan McBride and Margaret
Meister
Nancy McCormick
Tyler McCoy
James A. McDonald
Brenda McDonnell
Ross and Candice Mclvor
Kevin Meabon
Ed and Susan Medeiros
Amy Michael
Kollin Min and Katja Shoye
Manoranjana and Patnaik Mishra
Janice Moon
Dave Moore
Paul Morse
Martha and Eugene Nester
Network for Good
Doru Nica
Jeffrey and Margaret Nomi
Northwest Indian Fisheries
Commission
Steven Otto
David E. Overton and Katherine
Steuart
Ben and Julie Packard
Andrew Peoples
Don and Lisa Percival
Russell and Caroline Perisho
J. Henry Peters
Steve Phelps
Pine Lake Garden Club
Billy Plauche
Riley and Nancy Pleas
Lorraine Irene Potter
Prestige Custom Builders
Ashley Probart

Mike Pruett
 PSG Washington, Inc.
 Ingrid Rasch
 Jordan Rash and Sonja Rash
 Regence Employee Giving
 Campaign
 Jim Reinhardsen
 Norman B. Rice
 Sharon Kay Ricketts
 Suzanne Riney
 Tom Ringo
 Hope Rippeon
 Casey Riske and Cecilia Matta
 Mark Roberts and Maria
 Valdesuso-Roberts
 Tracy Robinson
 Jason Rogers
 Steve Rovig
 Harvey Rubinstein and Sharon
 Hammel
 Dave and Hazel Russell
 Jill Ryan
 Joe and Peggy Salz
 Robert and Joan Sample
 Norm and Helen Schaaf
 Jill Scheffer
 Glenn and Molly Seaverns
 Tim R. Seifert and Sonya Erickson
 Eric and Deborah Shields
 Haeryung Shin
 Jan and Jack Showalter
 Heather Simmons-Rigdon
 James Solimano and Karen
 Marcotte Solimano
 Dale Sowell
 Dale and Carol Sperling
 Jenness Starks
 Julie Stein
 Amanda Stock
 Lynn Stokesbary
 Herbert Stumpf
 Bonnie and John Tabb
 Walter S. Tabler
 Erin Tam
 Rahul Thombre
 Jeff Thompson

Robert W. Thorpe
 Aaron and Meghan Toso
 Brian Toy
 Robert Trent
 Molly Van Nostrand
 Steve Varga
 Edward L. Vervoort
 John and Marka Waechter
 Amy Walen
 Walt Carlson Memorial Fund
 Thomas and Kristina Weir
 Matthew and Marianne Wells
 Mark Wheeler
 Bruce L. Williams
 Stuart Williams
 Chuck Wolfe and Fiona Cox
 Charles and Christine Woods
 Bruce Woolsey
 Leslie Wright and Sheryl
 Westergreen-Berni
 Erin Younger and Edward Liebow
 Mona Yurk

**Protector Members
 (\$100 - \$249)**

David Abbott
 John Adams
 Jim Adler
 Steven and Alice Aeschbacher
 Ivan Agerton
 Michael Agüero
 Gordon and Marilee Ahalt
 Lynne Alexander
 Brooke Alford and Bill Wollaston
 Stephen Amorosi and
 Gayle French Amorosi
 Douglas R. Anderson and Anne M.
 Noonan
 Jim Anderson
 Karl and Christine Anderson
 Kathleen and David Anderson
 Matt Anderson
 Michelle Anderson
 Pam J. Anderson
 Rick Anderson
 Pete Apostle

Sandra Archibald
 Susan and Ken Armstrong
 Jay Arnold and Mary Beth Binns
 Rob Arnold
 Dee and Bill Arntz
 Anthony Aue
 Sheila Babb
 Thomas E. Backer and Jane Leslie
 Newberry
 Sally and Bradley Bagshaw
 Belinda Bail
 Brodie Bain and S. Todd Lee
 Derek Baker
 Eric Baker
 Joel Baker
 Thomas Bancroft
 Clarence Banks
 Eileen Barber
 Richard P. Barden
 Sybil Barney
 Barry Bartlett
 Kevin and Dawn Bates
 Ken and Nell Batker
 Baycliffe Strategies Inc.
 Christopher and Cynthia Bayley
 Gene and Sally Beall
 Mark Beardslee
 Renate Beedon
 Brooke Belman
 Linda Berry-Maraist
 Carol and Carl Binder
 Dale and Mary Jo Blahna
 Ellen Blair
 Emiko Blalock
 Mary Ellen Block
 Kyle Blum
 Brian Bodenbach
 Nan Bohanan
 Pieter and Corky Bohlen
 Beth Boram
 Kenneth Bounds and Linda Gorton
 David and Lisa Bowen
 Daniel and Nancy Bowen-Pope
 David Boyd
 David and Carlotta Boyd
 Steve Boyer

Murray Brackett
 Shannon Braddock
 Peter Braman
 Mike and Donna Brathovde
 Adam Brennehan
 David Brentlinger
 James and Sue Briggs
 Justin Bright
 Matt Bromen
 David S. Brown Jr.
 Kevin Brown
 Robert Brown
 Karen Bryan
 Marie P. Bui and Sebastian Simsch
 Paul and Bonnie Bunning
 Joan Burlingame
 Bob Burns
 Emily Burns
 Ted Burris
 Ranan Burstein and Michelle
 Frame
 Kim Butchereit
 Fred Butler
 Cambia
 Robert and Sharon Camner
 Tyson Carlson
 Wayne E. Carlson
 Kevin Carrabine
 Linda Carrière
 Brian and Lisa Carroll
 Glynis Carrosino
 Matt Carvalho
 John Cary
 Sue and John Cary
 Brendon and Kerri Cechovic
 Leda Chahim
 Bob Chandler
 Donna Chang
 Christopher Chapin
 Bill and Frances Chapman
 Jim Chapman
 Linda Chauncey
 David Chen
 Gary Chovnick
 Erin Christensen
 Keith Christian

volunteer spotlight: THE LONGTIME FRIENDS OF MADRONA PARK

The Green Seattle Partnership's success is tied intrinsically to the dedicated volunteers who give their time and sweat to restoring parks and green spaces around the city. There are many, many terrific volunteers, but few have been at it as long as Madrona Park Forest Stewards Judith Starbuck, Deirdre McCrary and Peter Mason.

Judith began working in Madrona in 1996, before the Green Seattle Partnership had even launched! Deirdre and Peter joined several years later. Madrona was not always the beautiful park it is today. Back then, neighbors saw trees covered in ivy, the paths were overgrown and eroding. So Judith and her neighbors started organizing work parties to clean up the park.

"It's great seeing the progress from when we started to where we are today," said Judith. "The park was overgrown and inhospitable. Homeless people were camping in there. It just was not welcoming. And now it is. It's wonderful to see the trails are in good shape, it's cleared back. There are new little trees and shrubs growing. It's well used. I almost never walk through without running into someone." For Judith, being a Forest Steward has provided the

opportunity for community, natural respite and life-long learning.

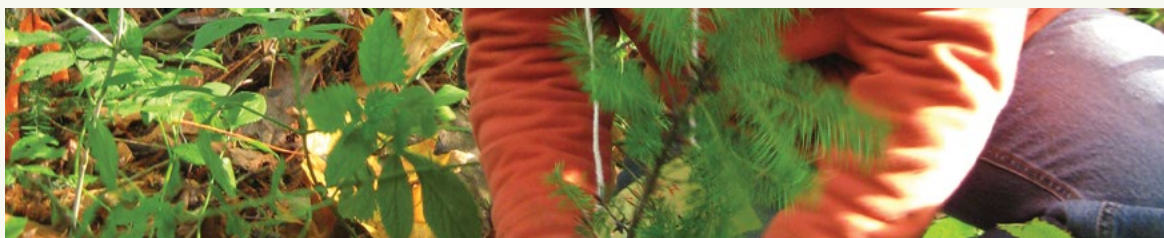
"Madrona is such a beautiful place and I love being out there.

I have thoroughly enjoyed working with the people. I've gotten to know neighbors I wouldn't have gotten to know otherwise. Plus I feel like I've had a college course in botany and restoration techniques. Just walk down to the stream and listen to it. It's such a treat to hear a brook babbling in the city.

Over the years, Judith, Deirdre and Peter have made incredible progress clearing invasive plant species, planting native plants, doing trail maintenance, educating the community on the park and more. They are now working on restoring the final section of the park.



THANK you



Shamra and Eric Clark
Judy and Steven Clifford
David Cline
Richard and Rita Rae Cloney
Cathy Cloutier
Vicki Coats
Candace Coe
Ken Cohen and Mary Beard
Christine Cole and Devor Barton
Theodore and Patricia Collins
Peter Conard and Laura Appell
Richard Conlin
Patrick Conner
William Connor, Sr.
Santos Contreras
Joe Cook
Stephen Cooper
June and Mervin Coover
Jim Corson
Kip Cramer
Mary Crawford
Bruce Cross
Sara Crumb
Layne Cubell
Chris Czesla
Lisa Dabek
Rose Marie and David Dale
Penny Dalton
Bruce Dammeier
Bruce Danielson
Bob and Molly Davidson
Doug Davis
Virginia Davis
Deva Dawson
Danielle De Clercq
Marco and Ryangja de Sa e Silva
Dayna Dealy
Richard DeBroux
Mike Dederer
Jim Defebaugh and Kristina
Defebaugh
Jim DeFranco
Mike Deller
Andrew Dempsey
Paul Desilet
Paul R. Detmer and Kathleen L.
Roach
Julian and Alice Dewell
Bill Dewey
Emily Dexter
Mchele D'Hemecourt
Ryan and Ann Dicks
Jana Dilley and Chris Holstrom
Maximillan Dixon
Roscius N. Doan and Virginia M.
Warfield
Chris Dorling
Jeanette Dorner
David and Wendy Dorothy
Mark and Mindy Doumit
Adam and Liz Draper
Susan Drummond
Pete and Phyllis Dukes
Lisa Dulude
Ned Dunn
Reagan Dunn
Michael Dunning

Steve and Mary Elayne Dunphy
Rita and Harlan Durand
T. Ryan Durkan
Marianne and John Earl
Jim Eddy
Bob and Vicki Edmonds
Robert and Ingrid Eisenman
Rich and Jeanette Elliott
Stuart and Irene Elway
Jim and Lynn Erckmann
Ara Erickson and Eric Higbee
Kris Ernest and Daniel Beck
Eldon and Carol Estep
Owen Fairbank
Giselle Falkenberg and Rockwell
Moulton
Gary Fallon and Leona De Rocco
Marte Fallshore and Dale
Brubaker
Jeremy Febus
Jim Feldmann
Ruth M Ferris
Jake Fey
Chris Fiori
June Fletcher
Barbara Flynn
Laura Ford
Brady Forrest
David Foster
Marshall Foster and Shanti C.
Brezna
Deborah Fouts
Nancy E. Fox and Nicholas H.
Allison
Robin and Jay Fox
Mary Francis
Kimberly Frappier
Benjamin Fraser
Jim Freese
Jim Frost
Howard Frumkin
Gary Fuller
Mark Funke
Ryan Gabriel
David and Gretchen Gacetta
Roger and Kris Garratt
Deborah Gayle
GE Foundation
Jessica Geenen
Bonnie and Jeffrey Geers
Rob Gelder
Carey Gersten
Sam Gibboney
Anthony Gibbons
Steven Gilbert
Lili and Peter Gish
Glenn Glover
Ruth Godding
Peter Goldmark and Wendy
Goldmark
Thomas Goldstein
Pat and Dennis Gossler
Gabriel Grant
Greg Gratz
Lisa Graumlich
Mark Gray
Scott Greenberg

Duncan Greene
Jim Greenfield and Susan Barley
Martinique Grigg
Jerry and Carol Gronfein
Dan Guderjohn
Arnie and Susan Gunderson
Christian and Julie Gunter
Lauren and Brandon Guzauskas
Barbara Guzzo
Cheryl and Craig H
Randolph B Haagens
Nan Haberman
Jane Hadley and Randy Robinson
Bob and Margaret Hager
Peter Hahn
Heather and Don Halabisky
Will Hall
Jon Hallgrimson
Lindsay Halm
Nathan Hambley
Scott Hamilton
Jason and Joey Hamlin
Paula and Alan Hammond
Patricia Harper
Kathryn Hartley
Suzanne Hartman
Jeffrey and Carey Hashimoto
Tim Hatley and Rachel Bianchi
Robert B. Hauge
Brian Hawkins
Neil and Ann Hawkins
Linda Heckel
George Heidorn and Margaret
Rothschild
John and Sandi Hempelmann
Mike Henderson
Timothy and Catherine Hennings
Dale and Diane Henningsgaard
Sam Henry
Max Hepp-Buchanan
Beth Hester
Bob Hibbs
Tim Hill
Beth Hintz
Holly Hoff
Matt Hoffman
Brianna Holan
Cynthia C. Holdren and Robert
Gold
Peter and Ann Holmes
Cindi Holmstrom
Cindy Holtz
Shane Hope
Colie Hough Beck
Holly and Jonathan Houser
Catherine Hovanic
Justin and Anna Howell
Mary Hsue
Jurgen and Susan Huck
Greg Huey
Heidi Hughes
Julie and Gordon Hungar
Steve and Marjorie Hunt
Ross Hunter
Dana Hurley
Todd Hurley
Jim Hutchinson

Mary Pope Hutson
Paul and Elizabeth Inghram
Jay and Trudy Insee
David and Debbie Irons
J.A. Brennan Associates, PLLC
Sandra Jackson-Dumont
Mark Janicke
Lauren Jassny
Terri and Mont Jeffreys
Robin S. Jenkinson
Janet Jensen
Jim and Sue Jensen
Bertil and Nancy Johnson
Betsy Johnson
Daniel Johnson
Gary Johnson
Jeff Johnson
Karen Johnson
Ken Johnson
Jones Lang LaSalle Americas, Inc.
Philip and Laurie Jones
Susan H. Jones
Glenda and Jens Jorgensen
Mike Jostrom
Brad and Erin Kahn
Bart Kale
George and Anna-Lisa Kanick
Ben Kanther
David A. Kappler and Ann
Fletcher
Norah Kates
Kris Kauffman
Arthur and Ruth Kaufman
Michael B. Keary
Jeanne Keenan
Sean Keithly
Mr. Jim Kelly
Mariah Kennedy
Cristin Kent Aragon
Jerry Keppler
Ann Klein
Jennifer Knauer
Bruce and Linda Knowlton
Jeanne Koenings and Dan Silver
Rachel Konrad
Fred Koontz
Matt Kowalczyk
Donald Kraft
Jeremy Krebs
Penelope Krises
Ellen Kritzman
Jacqueline Krolopp Kirn and
Thomas Kirn
Craig Krueger
Walter Kuciej and Maryann
Meaney
Matt Kuharic
Robert Kunreuther and Anita
Hampton
Julianne Lamsek
Land Asset Management LLC
Bill and Mary Lou Laprade
Doug Larson
Cary and Jim Lassen
Nancy Latham
Denise Lathrop
Thomas and Rhoda Lawrence

Robert Leach and Catherine M. Otto
 Paul Leavitt
 Anita Lehmann
 Marc Lentini
 M.A. Leonard
 Jeff W. Leppo
 Evan Lerer
 Andy Lewis
 John Lewis and Frances Lewis
 Steve Litzow
 Angela Loihl
 John Lombard and Jennifer Haykin
 David Lonergan
 Nubia Lopez
 Michael Lorenz
 Lucky Seven Foundation
 Pete and Olga Lymberis
 Ron and Alia Lynch
 Colin Macdonald
 Douglas MacDonald
 Joan Machlis
 Sally Mackey
 Kari Magill
 Peter Maier and Elizabeth Tennant
 David and Peggy Mainer
 Lindsay Malone
 Mike and Melinda Mann
 Hank Margeson
 Kristina Maritzak
 Nannette Martin and Michael Daley
 Paul and Karen Martin
 Brice and Bridgette Maryman
 Dave Mattern and Pamela Wilder
 Julie Matthews
 Marcie and Steven Maxwell
 Julie McAvooy
 Darron McCallon
 Joe McCarthy
 Pat McCarthy
 Doug, Kristi and Jacob McClelland
 Deirdre and Jay McCrary
 Joe McDermott
 Charles and Gisela McGehee
 Michael McGinn
 Brian and Carina McGinnis
 Peter and Barbara McGrath
 Jeanette and David McKague
 Robert M. and Marilyn McKenna
 Gates McKibbin
 Bernie McKinney
 Ann S. McNeil
 Ryan McShane
 Mark and Linden Mead
 Lynn Melby
 Ryan Mello and Jerry Hallman
 Lewis and Julie Merges
 Meridian Environmental, Inc.
 Sharon Metcalf and Randy Smith
 Ray and Elaine Meuse
 William Meyer
 Paige Miller
 Shyla Miller
 Deb Mitchell
 Steven Moe
 Min C. Moon
 Gwendolyn and Patrick Moore
 Jane and Hugh Moore
 Brandon Morgan
 Alan Moritis
 Matt Mormino
 Ian Morrison and Stephanie Ervin

Alison Moss
 Katie Moxley
 Andrew Mullenix
 Mike Mullet
 Michael J. Murphy
 Susan Murphy
 Joseph Murray
 Susana Musi
 Bob Myrick
 Mary Myslewicz
 Robert Nellams
 Megan Nelson Rubenstein
 Sheri Nelson
 David Neu
 Craig Nevil
 Chip Nevins and Amy Snover
 Jan Newton
 Pete Nichols
 Jim and Lynda Nicholson
 Kerry and Gwendolyn Nicholson
 Keith Niven
 Jim Nolan
 Christine Nordstrom
 Northwest Natural
 Horsemanship Center
 E MacArthur Noyes
 Mike and Julie O'Brien
 Sean O'Leary
 Peter Oliphant
 Kevin O'Neill and Lynn Livesley
 Jen and Graham Orriss
 Karin and Gary Ostrand
 John Owen
 Jon Owen
 Lynn Owen
 Ralph and Peggy Owen
 Cheryl Packwood
 Thomas Palm
 Carmen Palmer
 Cathryn Palmer
 Erwin Park
 Tara Parsons
 Scott Pascoe
 Benjamin Paulus
 Beth Pearson and David Zane
 Eriann Pearson
 Lois Ann Pearson
 Michael Perrow
 Diedra Petrina
 Brett Phillips
 Larry Phillips
 Aaron Pickus
 James Pidduck
 DanielLe Platt
 Jennifer Porter
 David and Betsy Potts
 Jim and Peggy Price
 Janet Pritchard
 Jeannette M. Privat
 Puget Sound Energy Foundation
 Andre Punt
 Marie Quasius
 Paul and Barbara Quay
 Charles Raines and Cindy Seramur
 David H. Ramsay and Carol E. Cooper
 Scott Ramsey
 Kevin Rash
 Ethan Raup
 Dave Reddy
 Asha Rehnberg and Larry D. Pluimer
 Ben Reiber
 Mary Jo Reid and Patrick S. Eggers
 Dale Reiner
 Wayne Reisenauer

Lee Rhodes
 Sale Rhodes
 Bill Richards and Ashley Steel
 Kimberly Richardson
 Kris Richey
 TC N. Richmond and Keith Richmond
 Kelly and Ben Rider
 Julie Riely-Gibbons
 Grant Ringel
 Gerry and Lynda Ring-Erickson
 Sol Riou

Sonny and Bridgette Robbins
 Phil and Anita Rockefeller
 Jim Rogers
 Christine Rolfes
 Rollin Fatland & Associates
 Harry Romberg
 Kris Romstad and Brewster Johnston
 Tracy Rooney
 Steve Roos
 Jon Rose
 Roslyn Sunday Market

landowner spotlight: KRISTINA AND RUSSELL VANDERSNICK

Kristina and Russell Vandersnick purchased their 64 acre farm in Buckley in 2009. Forterra holds a conservation easement on the property which protects the land's agricultural uses and also preserves the character of the historic barn on the property. The Vandersnicks are the third landowners to own the property since the conservation easement was placed on the land in 2000 by the Tait family.



"This property had everything we were looking for from the first viewing," said Kristina. "We wanted elbow room! An ideal place to raise kids and animals and food. This property has history and beauty we could not find anywhere else."

The Vandersnicks have two young daughters and were inspired to purchase the property to continue to use the land as pasture for their five Scottish Highland cattle, two horses and flock of chickens, ducks as well as their two dogs who watch over the farm.

"We purchased the property with the conservation status already in effect. For us the status means that the future of our land is guaranteed. I can watch my kids play out there - realizing that when they grow up this land will still be here. The same creek, the same lay of the land, even some of the same trees can be here for generations to come. I appreciate the wildlife that we see here daily and I enjoy being able to guarantee this habitat will be here for future generations of wildlife and our family."

Conservation of this type of landscape is important in the rapidly expanding areas of central Pierce County, however the long-term protection and care for the land is dependent upon a strong partnership between the landowners and Forterra's Stewardship department. The Vandersnicks are one of many families who care for these conservation easement lands and contribute to the legacy of their conservation in perpetuity.

THANK you



Rowley Properties, Inc.
Bob Royer
Abby Ruskey
Kristin Ryan
Majken Ryherd
Adrian and Marjorie Ryneveld
Allen Safer
Ann and Wayne Sandstrom
P.J. Santos
Jacobus Saperstein
Taryn Sass
Jay A. Satz
Marc Savage
Stanley Savage
Gail Savina
Rebecca Sayre
Eric Schallon
Daniel Schindler
Brent Schmidt
Daphne and Daniel Schneider
Mark Schneider
Scott Schreffler and Rachel Schreffler
Eric and Tera Schreiber
Jennifer and Gary Schroder
Wayne Schwandt
William Schwartz
Jean Schweitzer
Michele Scoleri
Jennifer Scott
Kari Scott
Dave and Lori Scurlock
Seattle Garden Club
Frank Sebenius
John and Dottie Selby
William Severson and Meredith Lehr
Stephen Shapiro
Mike Shaw
Megan Shay
John and Cynthia Shea
Erin Sheehan
Amanda Shellenberger
William F. Shepherd and Karen Madsen
Andrew Shifflette
Michael Shiosaki
DeLee Shoemaker
Morgan Shook
Kaarin Shumate
Charles A. Simenstad and Stephanie Martin
Robert Sims
Barbara J. Smith and Mark Oberle
Blake Smith
Dale and Susan Smith
Jason Smith and Teresa Torrance-Smith
Lauren C. Smith
Matt Smith and Lynn Cohee
Monty and Mary Lynn Smith
Cameron Smock
Sarah Snider
Dave Somers
Edie Sonne Hall
Sound Transit
Sarah Spaeth

Anna and Rob Spooner
Larry Springer and Penny Sweet
Douglas and Katherine St. John
Linda Stalzer
Catherine Stanford
Tracy Stanton
Liz Stenning
Ed and Kathy Sterner
Stevens, Natalie
Carolyn Stevens
Barbara and Thomas Stever
John and Sherry Stilin
Rick Still
John and Kay Stimson
John and Bettina Stokes
Jessica Stokesberry
Dan Stonington
Kevin Stoops
Melissa Strauch
Marilyn Strickland
James Stubner, Jr.
Diane Sugimura
Jo and Terry Sullivan
Jeannie Summerhays
Carly Summers
Mark Swanson
Andy and Veralea Swayne
Mike and Lynne Sweeney
Hally Swift
Hayes Swinney and Ryan J. Alger
Kit Tangen
Dave Tarshes and Deborah Kerdeman
The Taucher Family Foundation
Jeff Tayer
Bryce Taylor
Tom Teigen
Karis Tenneson
Katy Terry
Christopher Tezak
Pamela Thomas
Crittter Thompson
Sara Thompson
Matt Tilghman-Havens
Diane Tilstra
Steven and Nancy Tochko
Jeffrey and Sharon Todhunter
Julie Tokashiki
Sarah Tomt
Matt and Rhonda Topham
Nathan Torgelson and Katherine Torgelson
Kirby and Christine Torrance
Ted Treanor
Diana Tree
Arun and Ellen Trikha
Heather Trim
Frances F. Troje
Christie True and Lawrence James
Peter True
Debra Twersky
Julie and Todd Underwood
United Way of Snohomish County
Randolph Urmston and Eliza Davidson
Pat Vache
Frank and Leigh Anne Van Dusen

Stephanie Van Dyke
Alison Van Gorp
Vancil Law Offices
Nicole Vandenberg
Keith Vanderzanden
Marie Vanschravendijk
Mike Vitt
Linda Voigt
Martin Volken
Russell Wagstaff
Christina Waite
Lauren Walker
Janet Wall
Jacquelyn Wallace
Kevin Wallace
Mike Waller and Kate Grieshaber
Lisa Walrath
David Walsh
Robert A. Warfield
Rebecca Wassell
Corrie Watterson Bryant and Mason Bryant
Kathie and Randy Weibel
Chuck Weinstock
Dan Weiskopf
Rich Weiss
Wendie Wendt
Dalon Wesner
John West
Margie Wetherald
Gilda Wheeler and Ben Wheeler
Mary J. Wheeler
Woody Wheeler and Lori Cohen
Brenda White and Richard White
Alison C. White
Evan Whitfield
Thomas Whittlemore and Michele Broderick
Stephanie Wickstrom and Rex Wirth
Rebecca Wiess
Laura Wigren
Cynthia R. Wilkerson
Jana Wilkins
Michael Wilkins and Suzanne Olson
Kathryn A. Williams
Terry and Sue Williams
Derryl Willis
Dan Willott
Elizabeth Wilson
Kristine and Patrick Wilson
Mary Sue Wilson
Lucinda and Donald Wingard
Robert Winglee
Kathy and Clancy Wolf
Cheryl Woodruff
Julia Woog
Ken Woolery
Claire Wright
Paul Wright
David C. Wu
Craig R. Wyss and Abigail Smith
Erik and Helena Young
Amor and Danny Youngs
Belinda and David Zeitouni

Tributes

In Honor Of accessible forests
In Honor Of Amy Allen
In Honor Of always wanting to help those helping the world be a better place for our children
In Honor Of Jean Amick's birthday
In Honor Of Keith Binkley
In Memory of Annette Brigham
In Memory of John O. Burgess
In Honor Of Cascade Land Conservancy
In Honor Of Jennifer Chang's work
In Memory of Robert W. Clark
In Honor Of Gigi Coe and Mike Garland
In Honor Of my Dad, William Connor Sr.
In Honor Of Michelle Connor
In Honor Of Mike Corrigan
In Honor Of Gene Duvernoy
In Memory of Debbie Everette
In Honor Of Nellie and Maggie Faucett
In Memory of Joe and Bettie Fitterer
In Honor Of Antonio Galvan
In Memory of Matthew Girvin
In Memory of my beloved husband, Brent E. Godding
In Honor Of Nell Hiemstra
In Memory of Bertil E. and Peal N. Johnson
In Memory of Johnny Johnson
In Memory of Martin R. Kaatz
In Honor Of Donald Kimmett
In Honor Of Anna and Sara Knutson
In Honor Of Walter Kupersmith
In Honor Of Jennifer Ladd and Jean-Pierre Green
In Memory of Christopher Lehmann
In Memory of Mrs. Leibman
In Honor Of Mark Levensky
In Honor Of my son, Max Liebowitz
In Honor Of Diana MacDonald
In Memory of my father, James R. Miller
In Honor Of Leopold Novack and Remington Novack
In Honor Of Denes Pal
In Honor Of The Pass Life
In Honor Of Dixie Jo Porter
In Honor Of Tracy Robinson
In Memory of Beth Rogers
In Memory of Dottie Kay Selby
In Honor Of Ric and Sandra Seymour
In Memory of Clare Sheller, loving mother and conservation supporter
In Honor Of Kay Smith Blum
In Honor Of Rachel Stampfer
In Honor Of Darlene Stanton
In Honor Of Mark and Melyssa Stone, Merry Christmas

In Memory of Crystal Strobe
 In Memory of Gwen E. Stumpf
 In Honor Of Ms. Marlene Stutzman
 In Honor Of Tacoma Power Natural Resources Relicensing and Implementation Group
 In Honor Of Chris Walter
 In Memory of Scott White
 In Honor Of Jake Wimberger
 In Honor Of The Wittenberg Family XOXO and the Green Seattle Partnership
 In Honor Of WTA

In-Kind

Agate Field
 Airfield Estates
 Alente Spa Salon
 Anthony's Restaurants
 Apex
 Audio Visual Meeting Solutions
 Batch 206 Distillery
 BIG TREES
 Canyon Vista Winery
 City Of Aberdeen
 Coyote Canyon
 D & M Coffee
 Dragonfly Studio NW
 Martha Duskin-Smith and William Smith
 Gene Duvernoy and Carolyn Madsen
 Ellensburg Film Festival
 Gallery One
 Gard Vintners
 Justin Gibbens
 Darlene Grant
 Thomas F. Haensly
 Sarah Hansen
 Hillis Clark Martin & Peterson P.S.
 Jim and Diane Huckabay
 Jazz in the Valley
 Karen Johnson
 Kittitas County Chamber of Commerce
 Laura Marchbanks Photography
 Laurelhurst Cellars Winery
 Konrad J. Liegel, Attorney-At Law, PLLC and Karen Atkins
 Larisa Lumba
 Maison de Padgett
 Martinez & Martinez
 Masset Winery
 Mithun
 NurseryTrees.com of Snohomish, WA
 Paradisos del sol Winery
 Patagonia
 Pearl Care Dental
 R.L. Winston Rod Company
 Recycle Bicycle Shop
 George and Norma Jean Reece
 Rudder Bows Archery
 Severino Cellars
 Silver Lake
 Sound Native Plants
 Southard Winery
 Spirit of the West
 Suncadia
 Tadpole Haven Native Plants
 Temple Fork Outfitters
 Thurstone Wolf
 UBS Wealth Management
 University Heights Community Center Association
 Susan Waddle

Washington State Department of Transportation
 Wilday Scott and Company
 Willow Crest Wine Estates
 Wilridge Winery
 Windy Point Vineyard
 Wineglass

Matching Companies

Anchor QEA
 BlackRock Matching Gift Program
 Boeing Company Matching Gifts
 Boeing Employees Credit Union
 Bullitt Foundation
 Columbia Distributing
 Gates Foundation Matching Gifts Program
 GE Foundation
 Goldman Sachs Philanthropy Fund
 Google
 Hancock Timber Resource Group
 HSBC Philanthropic Programs
 John Hancock Matching Gifts Program
 Jones Lang LaSalle Americas, Inc.
 Kraft Foods Foundation
 Lucky Seven Foundation
 Microsoft Corporation
 Plum Creek Timber Company
 Puget Sound Energy Foundation
 Puget Sound Energy
 Regence Employee Giving Campaign
 REI, Inc.
 The Russell Family Foundation
 UBS Foundation
 United Way of King County

Legacy

Karl and Christine Anderson
 Virginia Anderson
 Sharon Baker
 Lucius and Nancy Biglow
 Peggy Bill and Stephen Sullivan
 Bruce and Kim Coe
 Priscilla Collins
 Michelle Connor and Mark Levensky
 Robert and Martha Cram
 Debra Crespino and Lois Harris
 Barbara Davidson
 Steve Durrant
 John Frederic
 Steven and Shirley Fuller
 Stanley and Marion Gartler
 Cheryl Germany
 Thelma and Charles Gilmur
 David and Melinda Gladstone
 John and Margo Gooding
 Paul and Laura Gould
 Pamela Gross
 Barbara and Clayton Haberman
 Willa and Walt Halperin
 Jerry and Linda Henry
 Antonin and Sarka Hruby
 Anthony and Joanne Ishisaka
 Jane Clapp Living Trust
 Cindy Jennings
 Eileen and Jim Kelley
 Paul Kipper
 Charles D. Laird and Judy H. Shepherd
 John and Jayne Laird
 Michael Laird
 Terry Lavender
 Carsten and Cristi Lien
 Roger Lowe
 Joan D. MacDonald

Mimi MacDonald
 Avron Maletzky
 McDanel Land Foundation
 Jack and Barbara Miller
 Gwendolyn and Patrick Moore
 Lloyd Morse
 Bill and Mary Ann Mundy
 Ernest and Dorothy Neville
 Nancy and Don Pearson
 Frank Pritchard
 Linda J. Pym
 Donald Robinson
 Tyrrell Rockafellar
 Jim Roush and Cynthia Wayburn
 David Russell
 Marilyn Sandall
 John Sangster
 Tricia Scanlon
 Ruth Shimondle
 Hillary Shurtleff
 John Spehar
 Rich and Candy Stewart
 Donna Tait
 Sonia Thompson and Bruce Barnbaum
 Mark Tipperman and Lorna Williamson
 Diane E. Walkup
 Janet Wall
 Harrison and Melissa Watts
 Rich and Ruth Williams
 Carolyn J. Wood
 Morton and Martha Wood

STEWARDS

Forterra Land Stewards

Dominic Accetturo
 Sean Albert
 Brooke Alford
 Andrew Allison
 Mary Ann Gillespie
 Chris Baca
 Don Blanchard
 Connor Blanchard
 Mike and Donna Brathovde
 Kim Brown
 Richard Bullock
 Allisa Carlson
 Ione Claggett
 Tim Colgan
 Steve Cooper
 Dorothy Davis
 Erin Derrington
 C.K. Eidem
 Todd Erickson
 Tom Galdibini
 Jay Goodwin
 Gary, Jennifer and Kevin Gray
 Alec Haberman
 Katlin Hanson
 Alex Harwell
 Carolyn Hope
 Katie Hurlburt
 Jim Hutchins
 Jane Hutchinson
 Laurel Kaminski
 Mia Keces
 Tom Kilroy
 Clyde Kostelecky
 Jeremy Krebs
 Mike Long
 Lindsay Malone
 Janice Martin
 Annika McIntosh
 Gary Meyer
 Harry Morgan
 Martha Moritz
 Jason Mulvihill-Kuntz

Michael Naegel
 Tom O'Keefe
 Reba Olsen
 Diane Parker
 Grant Raupp
 Christine Scheele
 Jonathon Schmitz
 Fred Smith
 Mary Sue Gee
 Ken VanBuskirk
 Tommy VanNess
 Janet Wall
 Emilie Warren
 Chuck Woods
 Bill and Cathy Zabriskie

Green Everett Partnership Forest Stewards

Jack Lockhart
 Scott Schreffler

Green Kent Partnership Stewards

Jack Lockhart
 Syabith Umar Sy Ahdan
 Julie Anderson
 Aaron Brooks
 Chuck Burget
 Sue Burget
 Jayme Clark
 Aaron Coleman
 Colleen Cristel
 Steve Crowell
 Jason Crowell
 Paul Dallapiazza
 Kelley Dallapiazza
 Crystel Davidson
 Chris Denny
 Ted Doan
 Deborah Drake
 Indah Fitria
 Maria Gomez
 Cathy Hernandez
 Doug Hill
 Tom Hinkle
 Terry Hooks
 Megan Ingalls
 Jasmeet Jessica Virk
 Cathrine Kiiorla
 Debbie Larson
 Collette Lastant
 Cris Lecompte
 Mahdhu Mehta
 Zandria Michaud
 Christen Miller
 Zama Mofokeng
 Gerry Olson
 Ginger Ott
 Maggie Raiwalui
 Amy Shillinger
 Pam Smith
 Dan Streiffert
 Nancy Streiffert
 Gina Talarigo
 Nancy Terry
 Penny Thayer
 Dianne Thompson

Green Kirkland Partnership Stewards

Tad Anderson
 June Fletcher
 Nona Ganz
 Marilee Henry
 Joy Johnsen
 Janice Johnson
 Kim Kuykendall
 Howard Langevald
 Megan Malloy (Gustafson)

THANK you



Weston Mathis
Lisa McConnell
Cary Odegard
Ina Penberthy
Lisa Pondsmith
Carol Lee Power
Judi Radloff
Tia Scarce
Kathy Schuler
Ron Shapiro
Linda Silber
Karen Story
Cecily Tillinghast
Dan Walker

**Green Redmond
Partnership
Forest Stewards**
Roberta DeBruller
Jim Downing
Glenn Eades
Bertha Eades
Marilynn Leland
Kaytlyn Sanders
Mike Shaw
Gary Smith
Shelley Wong

**Green Seattle
Partnership
Forest Stewards**
Dass Adams
Doug Adams
Lili Allala
Suzanne Anderson
Brett Austin
Glenn Austin
Sharon Baker
Barbara Banks
John Barber
Joey Baumgartner
Martha Beard
Denny Bellow
Eric Best
Mary Bicknell
Jason Bissonnette
Scott Blackstock
Van Bobbit
Alyse Boldt
Wallis Bolz
Gloria Bradford
Barbara Broderick
Bill Brookreson
Morry Browne
Carol Burton
Ann Busher
Eric Carlson
Selena Carsiotis
Merilee Catero
Susan Colton
Jim Corson
Peggy Cummings
Del Davis
Mary DeJong
Keva DeKay
Tara Denton
Darrell Dobson

Barbara Downward
Dean Druggee
Dee Dunbar
Paul Edmonson
Geoff Eseltine
Annie Fanning
Lynn Ferguson
Jim Gibson
Rhonda Goebel
Joie Goodman
Doug Gresham
Angela Gurney
Evelyn Hall
Robert Hayden
BJ Hedahl
Cathy Higgins
Steve Hodson
Darrell Howe
David Hutchinson
Joanne Ishisaka
Adam Jackson
Liz Kearns
Jourdan Keith
Tom Kelly
Dianne Kelso
John Kenny
Cliff Kessler
David Kessler
Robert King
Cheryl Klinker
Jim Kramer
Kory Kramer
Shannon Lambson
Howard Langeveld
Rick Lee
Kathryn LeMar
Annabelle Lota
Scott Luchessa
Mary Lynn Jensen
Carol MacIroy
George Macomber
Nonnie Madigon
Drexie Malone
Nannette Martin
Peter Mason
Gina Massoni
Bob Mayoue
Tom McArthur
Kathy McCall
Loren McElvain
Lisa McGinty
Luke McGuff
Dylan Mendenhall
Bonnie Miller
Justina Miller
Jay Mirro
Diane Morris
Joyce Moty
Garet Munger
Martha Nester
Joe Neumann
Tracy Nolan
Jordan Nordstrom
Carl Norlen
James Templeton Nuyts
Elizabeth Ohlson
Kari Olson

Andrea Ostrovsky
Michael Oxman
Thomas Palm
David Perasso
Lizzie Petrin
Carnell Phillips
Kristin Poinar
Anne Preston
Craig Rankin
Jana Robbins
Kirsten Rohrbach
Gail Rossi
Joe Roza
David Scattergood
Carol Schultz
Ken Shaw
Amanda Shellenberger
Mike Shellenberger
David Sinclair
Allan Smith
David Sohlstrom
Lynnette Spear
Nancy Spragins
Nicholas Stavish
Kevin Steffa
Ann Stevens
Johanna Striar
Rick Swing
Bonnie Taylor
Jennifer Theissing
Rony Thi
Craig Thompson
Darcy Thompson
David Thoules
Margaret Thouless
Jerry Tonkovich
Heather Van
Ed Vervoort
Lex Voorhoeve
Leah Wener-Fligner
Jean Wheeler
Ruth Williams
Jake Wimberger
Bunny Wood
Fran Wood
Stephanie Zinsen

**Green Tacoma
Partnership Habitat
Stewards**
Alison Baur
Cinda Berkhout
Sue Bernstein
Donna Chang
Wally Croshaw
Jessica Delgado
Alex Deome
Cyndy Dillon
Benjamin Dotson
Dan Fear
Rob Girvin
Heather Halabisky
Don Halabisky
Lacie Hamilton
Scott Hansen
Kristen Harrison
Phil Hertzog

Scott Hobbs
Elise Idle
Ralph Klose
Loren Korff
Annette Kruzic
Erin Liden
Phillip Lord
Andy Mordhorst
Carol Munsey
Kim Ohlmann
Amanda Reeck
Jeanine Riss
Robert Rothbauer
Tara Scheidt
Lynnette Scheidt
Larry Scheidt
Albert Styers
Robert Sweet
Sarah Sweet
Susan Sweet
Shelly Weiss
Tyler Wilson

Sponsors



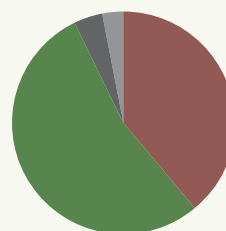
Photo Credits
Kate Akyuz
Nick Cilluffo
Benjamin Hayes
Mark Johnsen
Andrea Mojzak
Joanna Nelson de Flores
Todd Parker
David Santerre
Jill Scheffer
Skye Schell
Erica Simek
Michael Stanley
Kristina Vandersnick
Christopher Walter
Art Wolfe
Nicole Woltersdorf

2012 FINANCIALS

BALANCE SHEET	12/31/12 Unaudited	12/31/11 Audited
Current Assets	\$ 9,630,022	\$ 10,326,066
Conserved Land & Easements	\$ 22,836,676	\$ 24,587,089
Other Assets	\$478,734	\$ 378,491
Total Assets	\$32,945,432	\$35,291,646
Current Liabilities	\$ 971,706	\$ 652,511
Long Term Liabilities	\$ -	\$ 229,619
Total Liabilities	\$ 971,706	\$ 882,129
Unrestricted Net Assets	\$ 24,747,551	\$ 26,700,636
Board Designated Net Assets	\$ 2,379,447	\$ 2,246,656
Temporarily Restricted Net Assets	\$ 3,835,281	\$ 4,558,408
Permanently Restricted Net Assets	\$ 1,011,447	\$ 903,816
Total Net Assets	\$ 31,973,726	\$ 34,409,517
Total Liabilities and Equity	\$32,945,432	\$35,291,646

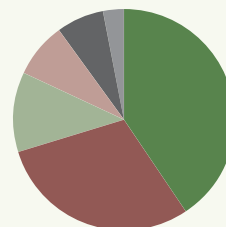
WHERE OUR FUNDING COMES FROM

● Government Grants & Contracts	54%
● Philanthropic Revenue	39%
● Other Revenue	4%
● Other Project Revenue	3%



WHERE WE SPEND OUR FUNDS

● Acquisition of Land & Easements	41%
● Conservation/Stewardship/Education	30%
● Management	12%
● Policy	8%
● Fundraising	7%
● Outreach & Marketing	3%



CONTACT US | forterra.org

For our work in the Central Puget Sound and for organization-wide questions, please contact our main office in Seattle:

901 5th Avenue, Suite 2200
Seattle WA 98164
T 206-292-5907
F 206-292-4765

For our work in the South Sound area, please contact our office in Tacoma:

1119 Pacific Avenue,
Suite 1300
Tacoma, WA 98402
T 253-274-4955

For our work in the Central Washington area, please contact our office in Ellensburg:

409 North Pine Street
Ellensburg, WA 98926
T 509-962-1654



Forterra was the first land trust in the state to be accredited by the Washington, D.C.-based Land Trust Alliance.