

2011

Annual Report



COMMUNITY & CONSERVATION

FORT&ERRA

Creating Great Communities
and Conserving Great Lands

CONTENTS

- 3 Message from the President
- 4 What We Do
- 5 The Cascade and Olympic Agendas
- 6 Our Lands
- 8 Our Communities
- 10 The Year by the Numbers
- 11 Looking Forward: Our Name Change
- 12 Map
- 14 Leadership
- 15 Chair's Perspective
- 16 Donors
- 17 Volunteer Spotlight: Seattle Tree
Ambassadors
- 20 Volunteer Spotlight: The Gray
Family
- 23 Financials



MESSAGE FROM THE PRESIDENT

At Forterra we are committed to a sustainable and livable future for our region. As such, we are by nature a forward-looking organization. We do not restrict our thinking to what once was, but always challenge ourselves with what can be. Our Annual Report is a momentary shift in this vantage point. It is when we take stock of our work and ourselves. It is our opportunity to evaluate and learn from the past year so we are that much more effective in the next. Guided by our Cascade and Olympic Agendas, over 2011 we implemented game changing programs to save our precious landscapes and build great neighborhoods; we conserved thousands of acres of our most cherished lands; and cared for our parks, woodlands, estuaries, stream sides and beach fronts across the region.



Thanks to great leadership in Olympia, our Landscape Conservation and Local Infrastructure Program was enacted into law. The program provides new tools to permanently conserve over 800,000 acres of farm, forest and riparian lands and at the same time finance hundreds of millions of dollars of critical infrastructure in our cities and neighborhoods. We conserved nearly 5,000 acres of land across our region from the spectacular Mt. Amabilis in Kittitas County to Jacob's Point with its mile of unaltered shoreline in Pierce County to the Union River which provides critical salmon habitat in Mason County. We helped launch new community gardens in Tukwila and Tacoma. We advanced transformational conservation projects such as the Kitsap Forest and Bay project, which will conserve 6,700 acres of forestland and about two miles of shoreline around Port Gamble Bay. Our incredible volunteers gave 80,000 hours of their time to restore neighborhood wooded parklands through Green City projects.

At year's end we became Forterra. Our new name reflects both our core work and our evolution as an organization. Over the last decade, our focus has expanded beyond the Cascades and Central Puget Sound to all of western Washington and Kittitas and Yakima Counties. We also have broadened the scope our work from traditional land conservation to helping cities, towns and neighborhoods become more sustainable and livable. Helping to create spectacular and vital communities that are a great choice for us and our families helps save our wild, natural and working lands from old fashioned sprawl.

Looking to the year ahead, we will put the Landscape Conservation and Local Infrastructure Program to work in cities around the region. Our major transformational projects will show the region that together we can conserve thousands of acres of precious landscapes and create great places to live. We will introduce an exciting new program so each of us can reduce our carbon footprint as we green-up our countryside. Our community programs and restoration projects will expand in scope and number of volunteers. In short, we will continue to pursue the goals of the Cascade and Olympic Agendas so our region will be sustainable, prosperous and livable.

By highlighting some of last year's accomplishments in this letter, I hope I demonstrated that our work has been worthy of your generous support. By concluding with an overview of some of our exciting work for 2012, I hope I provided ample reason for your continued engagement. Thank you.

A handwritten signature in black ink, which appears to read "Gene Duvernoy". The signature is fluid and stylized, with a long, sweeping underline.

Gene Duvernoy, President

WHAT WE DO

Forterra fills a unique niche as the largest community building and conservation organization dedicated to this region. We are shaping a future in which our environment and economies will flourish.

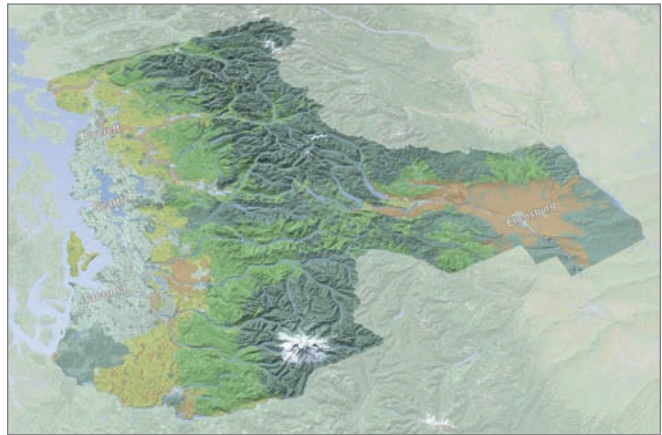
We partner with leaders and residents across the region to create healthy, livable and prosperous communities. For over 20 years, Forterra has led efforts to conserve more than 177,000 acres of forests, farms, shorelines, parks and natural areas and restore critical landscapes.

We are advancing a new approach to conservation to protect land on a scale never before seen. We encourage broad collaboration across all sectors; balance environmental, social and economic needs; and emphasize the link between vibrant cities and healthy lands. Recognizing the need for a holistic approach to the challenges created by our tremendous population growth, we advance pragmatic solutions with policy, land transactions, community engagement, environmental stewardship and more. Our work is grounded in market-based approaches with the understanding that economic vitality and environmental protection are both critical to maintaining our region's quality of life for the next 100 years.



CASCADE AGENDA

The Cascade Agenda is a 100 year vision and immediate action plan for the lands and communities of our region. It is based on the input of thousands of residents across our region and offers pragmatic solutions to the challenges and opportunities created by our tremendous population growth. The Cascade Agenda's collective vision is grounded in the belief that a broad coalition can achieve fundamental change.



It is a balanced approach to conservation and community building that encourages collaboration across all sectors and considers environmental, social and economic needs. The Cascade Agenda brings together business, civic and government leaders to accomplish two big goals:

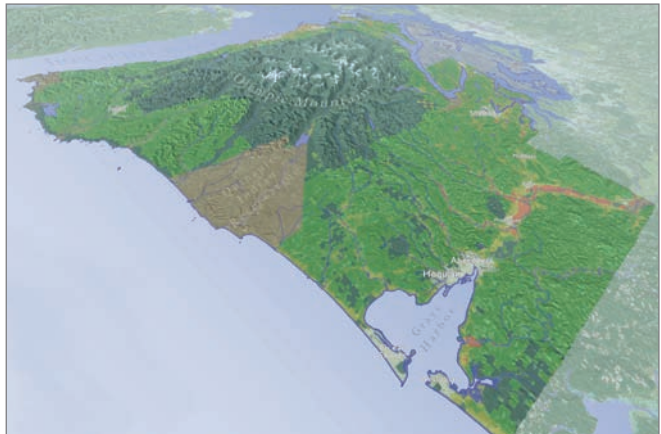
Our Lands: Protect 1 million acres of working forests (93% of existing timberland) and farms (85% of current agricultural lands) and 265,000 acres of shorelines, natural areas and parks.

Our Communities: Maintain our rural economies and way of life and enhance the vibrancy and livability of our cities and towns.

Since the Cascade Agenda was developed in 2004, our partners across the region have collectively conserved a total of 207,357 acres.

OLYMPIC AGENDA

The Olympic Agenda is an emerging conversation with the residents of the Olympic Peninsula to shape a future of great communities and healthy landscapes. Forterra is working with residents, organizations and businesses of the Peninsula to create a 100-year vision and immediate action plan for the lands, communities and economy of Clallam, Grays Harbor, Jefferson and Mason Counties. Drawing on the experience of creating The Cascade Agenda, Forterra will identify and help implement strategies that will provide a non-regulatory guide to conservation and community growth.



our lands //////////////////////////////////////

Forterra has conserved over 177,000 acres of forests, farms, shorelines, parks and natural areas to date. 2011 was another very successful year with nearly 5,000 acres of conservation completed across all five counties where we work, benefitting our economies, wildlife habitat, environment and communities. Once conserved, Forterra stewards the lands with help from dedicated volunteers, removing invasive plant species, planting native species and more. Here are a few highlights from the year:



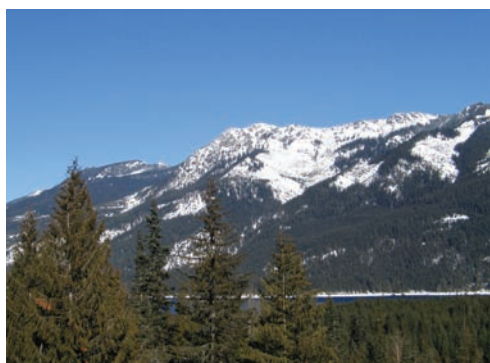
conservation

Kitsap Forest and Bay Project | The Kitsap Forest and Bay Project is a landscape-level effort by Forterra and partners to conserve approximately 6,690 acres of timber land and 1.78 miles of shoreline surrounding Port Gamble Bay in North Kitsap County. The partners include Kitsap County, Port Gamble S'Klallam Tribe, Suquamish Tribe, Great Peninsula Conservancy and members of the North Kitsap community. In September 2011, landowners Pope Resources and Forterra entered into an Option Agreement allowing 18 months to raise the funding necessary to purchase the land.

The land and shoreline around Port Gamble Bay are ecologically, economically and culturally significant. They provide fundamental cultural, spiritual and subsistence resources to the Port Gamble S'Klallam and Suquamish Tribes.



Lake Roesiger | In early July, Forterra negotiated the purchase of 2,855 acres around Snohomish County's Lake Roesiger by the County and the Washington Department of Natural Resources for permanent conservation. The land was once slated to be developed as a small city with over 6,000 homes. DNR is managing the land for sustainable forestry. Revenues from timber will be used for public school construction, habitat restoration and clean water work. The DNR is also working with Snohomish County to include additional opportunities for public recreation.



I-90 Corridor Wildlife Habitat | Forterra conserved nearly 727 acres of high-quality wildlife habitat along the I-90 corridor in Kittitas County. Purchases were made on three 80-acre properties along Keechelus Ridge and 480 acres at Mt. Amabilis. The conservation lands are part of the larger I-90 wildlife bridges project which will allow animals to safely cross the highway on bridges slated to be built on a 15 mile stretch between Hyak and Easton. Conserving high-quality wildlife habitat along the corridor will improve the bridges' effectiveness which in-turn improves safety for animals and humans alike. Forterra has conserved over 3,000 acres of wildlife habitat along the corridor in the past five years.



Jacobs Point | Jacobs Point is an 82-acre property on Anderson Island in Pierce County. Forterra facilitated the acquisition of the property for the Anderson Island Park and Recreation District with the help of grants from Pierce County and the state of Washington. The property's conservation value includes one mile of unaltered Puget Sound shoreline along Oro Bay, mature forested uplands and wetlands and amazing views of Puget Sound and Mount Rainer. Jacobs Point provides valuable habitat for endangered Chinook, chum and pink salmon that use the Nisqually Delta and Nisqually Reach. It also offers great public recreational opportunities including non-motorized boating, hiking and more.

stewardship



Cedar River | Since 2003, Forterra has partnered with Seattle Public Utilities, King County, Friends of the Cedar River Watershed, landowners and many volunteers to complete a large-scale restoration of the lower Cedar River. The river contains some of the best remaining aquatic habitat in the greater Lake Washington watershed. In 2011, Forterra and partners made significant progress in restoration efforts such as knotweed control and the restoration of native plant communities on public and private properties along the river.



Morse Wildlife Preserve Boardwalk | The 98-acre Morse Wildlife Preserve is one of Forterra's premier environmental education sites, offering visitors and students the opportunity to observe high quality Douglas fir and conifer forestland, wetlands and prairie habitat, all on the same property. Tahoma Audubon is a key partner in the management of the property. In 2011, volunteers completed construction of a boardwalk that they fundraised for, designed and planned that offers up-close study of the wetlands and access to a previously inaccessible forest. Phase one was completed in June with the final construction phase completed in November.

our communities //////////////////////////////////////

Forterra recognizes that by creating great communities in which people choose to live, work and raise their families, we can protect rural working and natural lands from sprawling development. We work with leaders and residents to help make our cities and towns more sustainable, livable places. Leading a network of cities to advance strategies for managing growth, we are fostering economic development and a sustainable future. Here are some highlights of our community work in 2011:

Community Gardens

Community gardens are exploding in popularity in towns and cities across Washington and Forterra is working to help them grow. Gardens help communities increase access to healthy food, strengthen bonds between neighbors, offer educational opportunities and more. In 2011, Forterra partnered with nonprofits, churches, community members and governments to help get a new community garden off the ground in Tukwila and expand the Tacoma and Pierce County community garden program.

Forterra collaborated with the International Rescue Committee, a national nonprofit that resettles refugees, and the St. Thomas Church to build a 70-plot community garden on the church grounds in Tukwila. With Forterra's help, the Community Garden program in Tacoma and Pierce County has grown from 13 gardens in 2008 to over 40 last year.



Landscape Conservation and Local Infrastructure Program

In May of 2011, Governor Christine Gregoire signed into law a groundbreaking piece of legislation, The Landscape Conservation and Local Infrastructure Program. Forterra worked across the aisle to get this legislation passed and with Governor Gregoire's signature, cities are now able to participate in land conservation while simultaneously revitalizing local economies, creating jobs, and improving the quality of life for residents.

The program combines a real estate tool called Transfer of Development Rights with a financing option for cities' infrastructure and redevelopment needs. It is an innovative approach that balances this region's economic, community and environmental needs. And now that the program is Washington law, investment in the future of urban communities is linked with conservation of rural landscapes. This region's cities and counties now have opportunity and incentive to work as partners to protect the lands that provide all of us with clean drinking water, locally grown food and unparalleled places to recreate and enjoy nature.



Green Cities Program

Forterra's Green Cities Program utilizes its unique public-private partnerships with cities and volunteers around the region to restore and steward urban parks, natural areas and green spaces and foster strong community bonds. In 2011, the Green Tacoma, Green Redmond, Green Seattle, Green Kirkland and Green Kent Partnerships all made significant progress towards their long-range restoration goals.

Green Tacoma: 1,662 volunteers contributed 5,250 hours of restoration.

Green Seattle: 20,309 volunteers gave 83,341 hours (including 7,377 youth contributing 26,827 hours).

Green Redmond: 1,450 volunteers contributed 3,935 hours (including 762 youth contributing 1,990 hours).

Green Kent: volunteers gave 1,820 hours of their time (including 580 hours by youth). In addition the 20-year Park and Natural Area Restoration Plan was published.

Green Kirkland: 1,780 volunteers gave 8,451 hours of their time.

Kirkland Transit Oriented Development

In June 2011, the Kirkland City Council voted unanimously to rezone the land at the South Kirkland Park and Ride to allow for more housing choices, including multi-family and affordable housing. Not only will this transit oriented development help a broader range of Kirkland residents by offering great choices in affordable housing, it will also reduce transportation costs, the second largest household expense on average. Affordable transit oriented development is a key component for creating the sustainable livable communities that The Cascade Agenda aims to make a reality for this region.

Forterra worked to advocate for these zoning changes by educating Kirkland citizens and helping them get engaged. We utilized several innovative engagement strategies to connect with community members and students to explain the benefits of affordable, walkable transit oriented communities.

Edmonds Complete Streets

Complete Streets are streets designed to safely accommodate walkers, bicyclists, drivers and all other road users equally. In 2011, Forterra worked closely with the City of Edmonds, citizens and the Cascade Bicycle Club to get a Complete Streets ordinance passed. With the ordinance in place, all future streets designed and built in Edmonds must have provisions for all user types.

Forterra approached the City of Edmonds in early 2011 about a Complete Streets ordinance for the city. With Edmonds on board, Forterra and Cascade Bike Club held several information sessions with residents to explain the benefits of Complete Streets and help people get involved in the process. Finally, Forterra helped draft the proposed language for the ordinance that was passed in June 2011.

EPA Building Blocks

In Fall 2011, Forterra and the Building Sustainable Communities Consortium received a \$365,000 grant from the Environmental Protection Agency's Building Blocks for Sustainable Communities Program. The Consortium includes Forterra, Greenbelt Alliance, Envision Minnesota and the Massachusetts Smart Growth Alliance.

Beginning in 2012, the grant will be used to offer free smart growth technical assistance to local, regional, state and tribal government agencies and community-based organizations working in close conjunction with any such division of government in the four regions in which the Consortium nonprofits work—the Central Puget Sound region and Olympic Peninsula in Washington, the San Francisco Bay Area, the Twin Cities Metro Area and Greater Minnesota, and the Greater Boston Area. The assistance will help them attract growth, protect the environment, improve public health, facilitate job creation and economic opportunity and improve overall quality of life.

2011 BY THE NUMBERS

4,807.49 acres conserved across all **five** counties in which we work.

Lake Roesiger was the single largest conservation project at **2,854.75 acres**

Number of projects completed: **20**

Forestland: **3,526.80 acres**

Parks: **81.64 acres**

Freshwater Streams and Shoreline: **723.55 acres**

Marine Streams and Shoreline: **131.84 acres**

Community Gardens completed in 2011: **8**

\$100,000 from The Paul G. Allen Family Foundation to promote fresh food to food banks through community gardens

22: New Land Stewards helping Forterra care for our protected lands across the region

Total Green Cities Volunteer Hours: **94,246**

Number of Green Cities Volunteers: **25,241**

Green Cities Youth Volunteer Hours: **36,774**

There are **19** cities in Forterra's Cascade Agenda City network representing **39.12%** of the population in the Cascade Agenda region

With the help of Forterra, **3** new cities and Counties got Transfer of Development Rights programs in 2011 to help shape a better future with conserved lands and great communities

800,000 acres: the potential conservation that could result from the new Landscape Conservation and Local Conservation Program



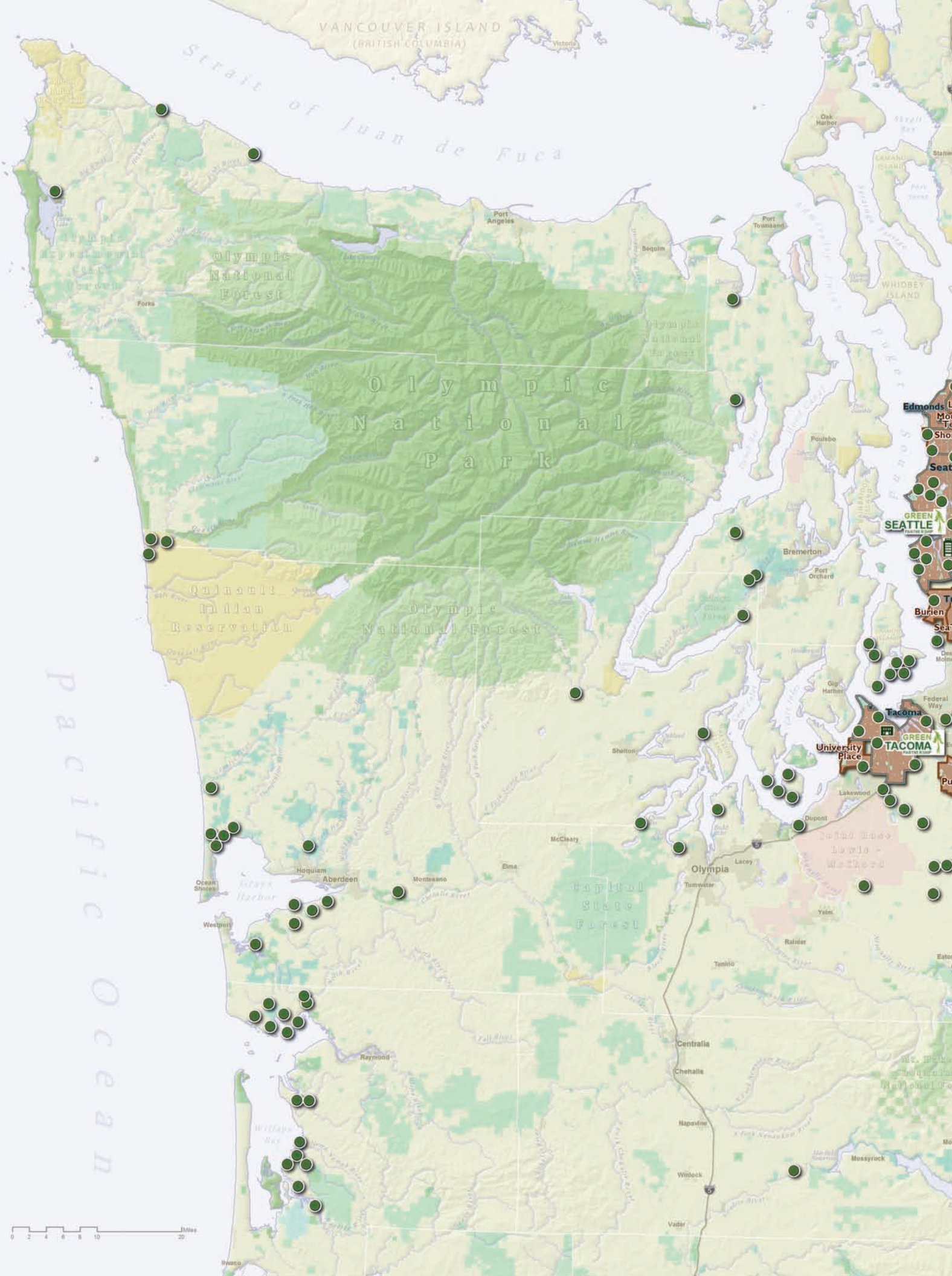
LOOKING FORWARD: OUR NAME CHANGE

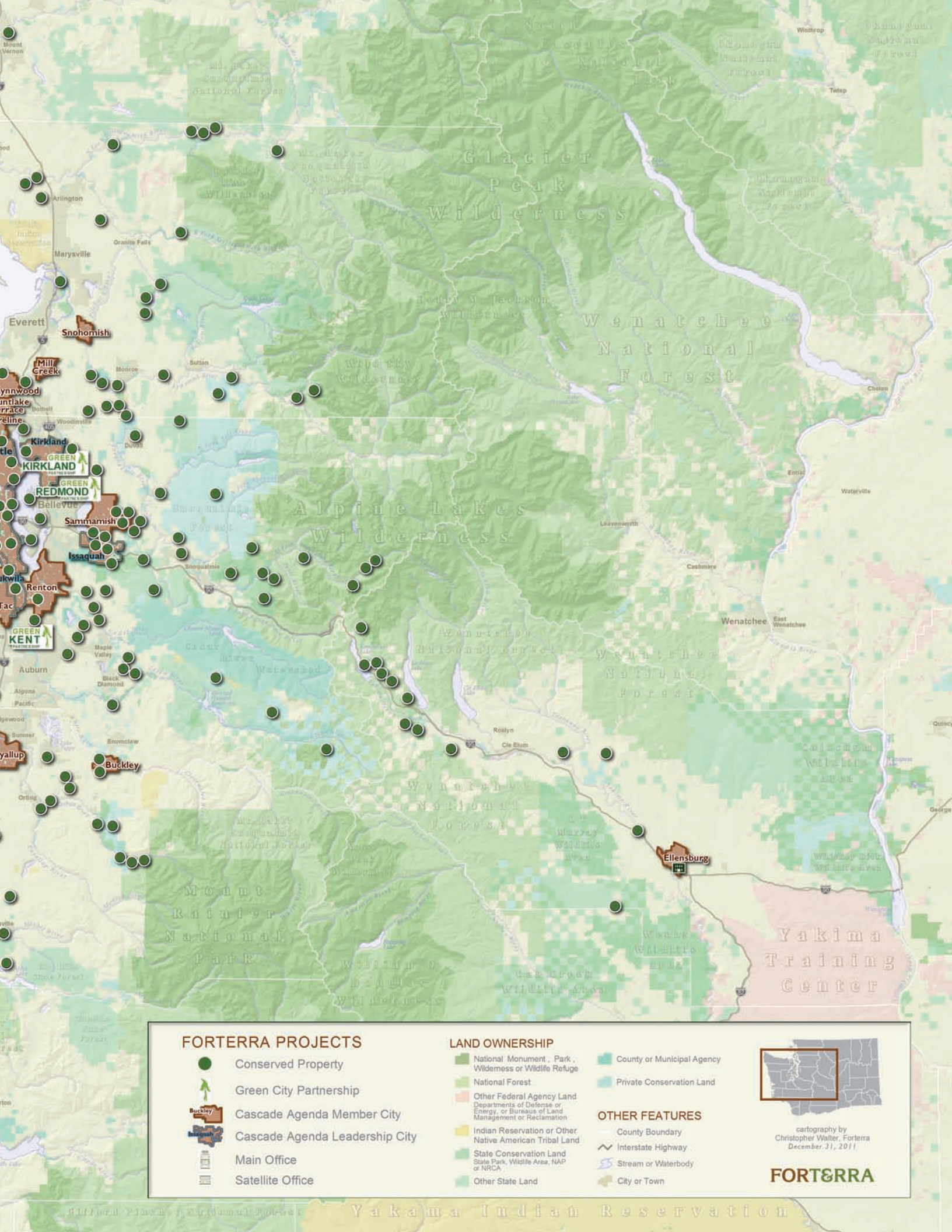
Our mission has always been driven by the future and what it holds for our children and grandchildren. It requires us to adapt to emerging community needs and shifting regional challenges. We must be nimble in our operations and creative in our approach. In the past decade, we have grown geographically outside the Cascade region and programmatically beyond land conservation. It was this evolution that brought about our name change from Cascade Land Conservancy to Forterra.

In the past 22 years, we have conserved over 177,000 acres of land from small community parks to working lands spanning tens of thousands of acres. In 2005, the creation of our 100-year vision and action plan The Cascade Agenda led us to understand that not only are our cities and towns as important to focus on as our rural, natural and working lands, they are, in fact, a significant part of the solution. If we create great communities in which people choose to live, work and raise their families, we can protect rural working and natural lands from sprawling development.

With this realization, we began actively advancing programs within our urban environment. From restoring urban forested parks to engaging city leaders in new policy development to mobilizing citizens to take action in their communities, our work within cities has proven to be effective and valuable. In the 2011 Legislative session in Olympia, we championed a bill that links the conservation of our working lands with the revitalization of our cities and towns. The Landscape Conservation and Local Infrastructure Program provides cities with much needed financing for infrastructure improvements in exchange for conserving local farms and forests. The bill's passage was the culmination of years of work by this organization and exemplifies the importance of a regional perspective that includes both a focus on conserving great lands and creating great communities.

As we look forward with our new label Forterra, we will continue to advance new programs to resolve age old problems. As a region, we have much to celebrate, but the opportunities for the future are even greater. Our new name is not a deviation from our mission; it is a recognition of the advancement of an organization. We remain grounded in our principles that we must encourage collaboration across all sectors and balance environmental, social and economic needs. It is these principles that continue to drive our holistic approach to creating a future worthy of our children and grandchildren.





FORTERRA PROJECTS

- Conserved Property
- Green City Partnership
- Cascade Agenda Member City
- Cascade Agenda Leadership City
- Main Office
- Satellite Office

LAND OWNERSHIP

- National Monument, Park, Wilderness or Wildlife Refuge
- National Forest
- Other Federal Agency Land
Departments of Defense or Energy, or Bureaus of Land Management or Reclamation
- Indian Reservation or Other Native American Tribal Land
- State Conservation Land
State Park, Wildlife Area, NAP or NRCA
- Other State Land

- County or Municipal Agency
- Private Conservation Land

OTHER FEATURES

- County Boundary
- Interstate Highway
- Stream or Waterbody
- City or Town



cartography by
Christopher Waller, Forterra
December 31, 2011

FORTERRA

FORTERRA LEADERSHIP

Board of Directors

Officers

Peter Orser, Chair
Weyerhaeuser Real Estate Company
Jim Greenfield, Vice Chair
Davis Wright Tremaine, LLP
Bruce Williams, Treasurer and Immediate Past Chair
HomeStreet Bank
Patti Case, Secretary
Green Diamond Resource Company

At-Large Members

Rob Bernard, Microsoft Corporation
J.J. Collins, Freestone Realty, LLC
Gene Duvernoy, Forterra
Nicole Faghin, Reid Middleton Inc.
Daniel Friedman, University of Washington College of Built Environments
Bert Gregory, Mithun
Bob Hart, Enpro Consulting
John Howell, Cedar River Group
A-P Hurd, Touchstone Corporation
Terry Mutter, The Boeing Company
Ken Myer, Yapta
Greg Nickels, Former Mayor of Seattle
Dan Nordstrom, Outdoor Research
Thomas O'Keefe, River Advocate
Floyd Rogers
Joe Sambataro, Labor Ready Inc.
Broderick Smith, Urban Visions
Aaron Toso, Gallatin Public Affairs
Bill Taylor, Taylor Shellfish Farms
David Towne, Towne Planning Services

Ruth True, NuBe Green
Doug Walker
Andy Wappler, Puget Sound Energy
Ron Whitener, University of Washington School of Law

Council of Advisors

Gerry Johnson, Chair, Pacifica Law Group
Ken Alhadeff, Eltteas Enterprises
Phil Barrett, Private Investor
Bob Drewel, Puget Sound Regional Council
Bruce Hosford, Hosford Ventures
Mike Garvey, Saltchuk
John Howell, Cedar River Group
Nick Hanauer, Second Avenue Partners
Carol James, Open Space Advocate
Judd Kirk, Port Blakely Communities
Brian Janssen, Onyx Founder
Martha Kongsgaard, Kongsgaard Goldman Foundation
John McCoy, Tulalip Tribes
Denny Miller, Denny Miller Associates Inc.
Dan Nordstrom, Outdoor Research
Bill Pope, Mazama Country Inn
Ron Sher, Terranomics Development
Herb Simon, Simon Johnson LLC
David Skinner, ShadowCatcher Entertainment
Greg Smith, Urban Visions
Craig Ueland
Maryann Tagney Jones
Bob Wallace, Wallace Properties

Forterra Enterprises

Board

Steve Ohlenkamp, President, The Communications Group
Rod Brown, Cascadia Law Group PLLC
Jim Greenfield, Davis Wright Tremaine
Jim Reinhardtsen, Heartland LLC
Gary Young, Polygon Northwest Company

Trustees

King County
Thomas O'Keefe, Chair
Brooke Alford
Mark Boyar
Crystal Carter
Wally Costello
Nona Ganz
Jim Greenfield
Carolyn Hope
Craig Krueger
Doug McClelland
Harry Morgan
Dave Russell
Chuck Wolfe
Janet Wall

Kittitas County

Jim Armstrong
Jim Briggs
J.J. Collins
Deborah Essman
Kirk Holmes
Jim Huckabay
Jeff Jones
Kelly Larimer
Jason Smith
Tami Walton

Pierce County

Aaron Toso, Chair
Bruce Beckett
Katrina Bloemsma
Ione Clagett
Lloyd Fetterly
Tom Galdabini
Ron Hendry
Lara Herrmann

Kris Kauffman
Ian Morrison
Nancy Pearson
Dave Seago
Monty Smith
Herb Stumpf
Anna Thurston
Debbie Young
Derek Young
Allen Zulauf

Snohomish County

Nicole Faghin, Chair
Jay Goodwin
Stephanie Hansen
Linda Neunzig
Allison Raduziner
Paul Roberts
Scott Schreffler
Reid Shockey
DJ Wilson

Mason County

Patti Case, Chair
Jean Farmer
Emily Garlich
Bob Hager
Tom Hamilton
Terri Jeffreys
Brian McGinnis
Dan O'Neal
David Overton
Dawn Pannell
Gerry Ring-Erickson
Bob Simmons
Bill Taylor

CHAIR'S PERSPECTIVE



Forterra's many 2011 successes are real world examples of the power of our unique approach to the business of conservation. The business has changed and we are changing with it and, I'm proud to say, causing some of that change. We understand that collaboration is key and continuous innovation with a nimble ability to act are critical for achieving the ambitious goals of The Cascade and Olympic Agendas.

As you've seen in this Annual Report, we made marked progress in implementing the Agendas. The Forterra authored Landscape Conservation and Local Infrastructure program passed through the 2011 Legislative Session and was signed into law despite the fact that bills unrelated to the state budget were slated to fail. In the fall, Forterra made significant progress on the Kitsap Forest and Bay Project with our purchase option agreement with

pope. It provides the potential for the landscape-scale conservation of 6,690 acres of timber land and 1.78 miles of shoreline in North Kitsap County.

That same tenacity, organization style, vision and innovation is what drew volunteers to join us and give approximately 80,000 hours of their time to restoring urban natural spaces through the Green City Partnerships. It is the reason we successfully conserved over 5,000 acres across all five counties in which Forterra works.

Of course, none of our success would be possible without the support we receive from our volunteers, donors, partners and friends. We have an amazing group of constituents that, just like us, are dedicated to conserving the great lands of this region and creating the high-quality communities in which we want to raise our families, work and play. For that, I thank you.

Looking forward, our accomplishments in 2011 position us to once again succeed in 2012. We will continue to advance the Landscape Conservation and Local Infrastructure program around the region. We will grow our Green Cities programs. Our community building work will help us forge stronger partnerships with allies new and old. I am most excited about our potential to be a Convenor for the unique discussions we must have around the visualization of Great Communities. Forterra has demonstrated an uncanny ability to go beyond the traditional with a broad diversity of stakeholders in pursuit of a bigger than life vision.

With a continued focus on the integral goals of creating great communities and conserving great lands around the Central Cascade Region and across the Olympic Peninsula, we at Forterra are going to have a great year.

A handwritten signature in black ink, appearing to read 'P. Orser'.

Peter Orser, Board Chair



thank you //////////////////////////////////////

Contributions from January to December 2011 Conservation Circle Patrons (\$10,000 and above)

Anonymous (8)
American Foundation
Jean and Russell Amick
Carmick, LLC
CleanScapes
Ruth Daugherty and Bradley Nelson
Davis Wright Tremaine LLP
Gene Duvernoy and Carolyn Madsen
Michael and Lynn Garvey
Horizons Foundation
Green Diamond Resource Company
HSBC
K&L Gates
Klorfine Foundation
Kongsgaard-Goldman Foundation
Margaret A. Cargill
Philanthropies
McKibben Merner Family Foundation
Merrill & Ring Forest Products LP
Microsoft Matching Gifts Program
Keith and Sandra Navidi
Outdoor Research
Paul G. Allen Foundation
Peter and Laura Orser
Pope Resources
Puget Sound Energy
Quadrant Homes
REI, Inc.
Schnitzer Steel Industries
Ron and Eva-Maria Sher
S.L. Gimbel Foundation Fund
Sonia O. Kemp Charitable Trust
Starbucks Coffee Company
Tagney Jones Family Fund at The Seattle Foundation
Taylor Shellfish Farms
The Boeing Company
The Forest Foundation
The Seattle Foundation
The Sequoia Foundation
Joseph Vance and Sara Throckmorton
Ruth and Bill True
Doug and Maggie Walker
Family Foundation at The Seattle Foundation
Norman and Lori Weaver
Wells Fargo
Wildlife Forever Fund
Young Life

Conservation Circle Guardians (\$5,000 - \$9,999)

Anonymous (2)
Barrett Family Foundation
Boeing Employees Credit Union
Ting-Wei Chen and Jialan Huang
Evergreen Fire Alarms
Green Options Fund at the Greater Kansas City Community Foundation
Hancock Forest Management

Pete Higgins and Leslie Magid
Hosford Family Foundation at The Seattle Foundation
Gerry Johnson and Linda Larson
JiJi Foundation
Jim and Eileen Kelley
Martin Flynn Public Affairs, Inc.
Robert D. Rasmusen
ShadowCatcher Entertainment
David and Catherine Skinner
Symetra
Norman Tjaden
David and Chris Towne
Ruth and Bill True
Washington Realtors®
Weyerhaeuser Giving Fund

Conservation Circle Trustees (\$2,500 - \$4,999)

Anonymous (3)
Paul and Debbi Brainerd
Matthew Cohen
Denny Miller Associates Inc.
Earth Share of Washington
Scott and Susan Freeman
Dan Fulton
Florence B. Kilworth Foundation
Greater Tacoma Community Foundation
Mark and Lynne Johnsen
Carl Haefling and Pam Johnson
Kittitas County Field & Stream Club
Tom and Mary Louise Hager
Hancock Forest Management
Henry M. Jackson Foundation
Juniper Foundation
Karr Tuttle Campbell
John Kniskern
Master Builders Association of King and Snohomish Counties
Microsoft Corporation
Terry and Regina Mutter
Dan and Diane O'Neal
Pacific Portfolio Consulting, LLC
Beth and Wade Perrow
Plum Creek Timber Company
Polygon Northwest
Port Blakely Companies Inc.
Prairie Foundation
Frank Pritchard
Tom and Sally Reeve
William and Jill Ruckelshaus
Salser Family Foundation
Sambataro Family Foundation
Stoel Rives LLP
Thompson Smitch Consulting Group
University of Washington
College of Built Environments
Vulcan Inc.
Chris Wilcox
Grant and Frances Woodfield
Martha Wyckoff and Jerry Tone
Sheila Wyckoff-Dickey and Charley Dickey

Conservation Circle Advocates (\$1,000 - \$2,499)

Anonymous (9)
J and Sandra Allen
Alliance for Community Trees
Antioch University Seattle
Robin A. Appleford

Jerome Arbes and Anne Knight
Mary Arney
Robert and Sarah Arney
Tom Barghausen
Bruce and Nannette Bassett
Thomas Bayley
Bentall Kennedy
Lucius and Nancy Biglow
Dick Birnbaum and Pamela Okano
William and Mary Black
Sarah Blocki
Bluefield Holdings
Jabe Blumenthal and Julie Edsforth
Brian Bookey
Betty and Edgar Bottler
Jeff and Debbie Brennan
Toby Bright
Tim Burgess
Nancy S. Callery
CamWest Development LLC
Charlie and Amy Carter
Cedar River Group
Georgios Chrysanthakopoulos
City of Issaquah
City of Seattle Combined Charities
City of Seattle Parks and Recreation
City of Tacoma
Cocker Fennessy Inc.
Kelly Cole and Jon Tinter
J.J. and Jonine Collins
The Commerce Bank of Washington
Michelle Connor and Mark Levensky
Coughlin Porter Lundeen
Darigold
Maud and Marc Daudon
Elizabeth Davidow and Michael Ford
Norm and Suzie Dicks
Molly and Talmage Edman
Emily Hall Tremaine Foundation
Environ International Corporation
Jim and Gretchen Faulstich
The Fearey Group
Barbara Feasey and Bill Bryant
Ellen Ferguson
Lloyd and Pat Fetterly
Bartow and Marilyn Fite
Gallatin Public Affairs
Nona and Ulrich Ganz
Kathryn Gardow and David Bradlee
Bryan Glynn
Greater Everett Community Foundation
Paul and Laura Gould
Dan Grausz and Clare Meeker
Joan Gray and Harris Hoffman
Green Diamond Resource Company
Virginia and George Gunby
Barbara and Clayton Haberman
Harris Charitable Fund Program
Andy and Freeman Held
Jeanette L. Henderson
Jerry and Linda Henry
Hillis Clark Martin & Peterson P.S.
Bill Horder

Carol and Keith James
Cindy Jennings
Sally and Warren Jewell
Karen Johnston and Barlow Buescher
Mike and Peggy Kanaga
Matt and Sara Kellogg
Ted Koehn
Randy Lee
Mire Levy
Konrad Liegel and Karen Atkins
Susan Little
Linda Maxson and Toby Miller
Nancy McCormick
Carl R. and Jacklyn F. Meurk
Charitable Giving Fund
Miller Nash, LLP
Samuel Miller and Anne Miller
Randa Minkarah
Mithun
Raymond Mosher
MultiCare Health System
Ken Myer and Laurie Myer
Nintendo of America, Inc.
Norm Dicks for Congress Committee
Norton-Arnold & Company
Novastar Development Inc.
Randy and Shellie Oakley
Oregon Community Foundation
Nancy and Don Pearson
Pierce County Surface Water Management
PSG Washington, Inc.
Raymond James Charitable Endowment Fund
George Reece
Floyd and Judy Rogers
Sellen Sustainability / Sellen Construction Company
David and Alice Shorett
Short Cressman and Burgess PLLC
Sierra Nevada Brewing Co.
Paul Silver and Christina Marra
Gregory B. Smith
Peter and Janet Stanley
Allan and Diane Steinman
Rob and Jennifer Stephenson
Dick and Hope Stroble
The Student Conservation Association, Inc.
Summit Law Group PLLC
Steve and Liann Sundquist
SvR Design Co.
Swedish Medical Center
Jerry Teel
The Blume Company
The Fearey Group
The Regence Group
The Schuster Group, Inc.
Tom Tierney and Carol Wood
Touchstone Corporation
William Trinen
Tulalip Tribes of Washington
University of Phoenix
University of Washington
College of the Environment and School of Environmental and Forest Sciences
Urban Renaissance Group, LLC
VanNess Feldman GordonDerr
Catherine Walker
Christopher E. Walter and Lynn Scherer



Volunteer Spotlight: Tree Ambassadors Penny Kriese and Jessica Roundy

Thanks to Forterra's work with the US Forest Service's Urban and Community Forestry Program, the Green Seattle Partnership has been able to branch out from the parks and into residential trees. Working closely with the City of Seattle, we've been promoting healthy and increased tree canopy throughout Seattle with the creation of the Tree Ambassador Program.

Volunteer Tree Ambassadors from neighborhoods around Seattle are doing their part to help raise awareness and promote healthy trees and forests with tree planting, invasive species removal and outreach. Two of our first year Tree Ambassadors have been working together in Green Lake and Wallingford in North Seattle to help connect people with some of the amazing trees in their neighborhood. Penny Kriese and Jessica Roundy met through the Tree Ambassador program and have made great progress in their first year on the "job."

The team was awarded a Boost grant from the City of Seattle to create an online tree walk for the trail around Green Lake. Penny and Jessica surveyed previous tree data and field data to create an amazing tree walk around the lake that identifies and elaborates on some of the standout trees that are situated around the lake. Penny brought skills from her previous work as a Tree Steward in Arlington, Virginia and was eager to dive into a tree program when she moved to Seattle a few years ago. Jessica is a landscape designer who was looking for a way to engage with her community through one of her passions: plants.

The Green Lake/Wallingford Tree Ambassadors will work to expand their tree walk and tackle other tree projects in their neighborhoods.

Check out the Green Lake tree walk at:
<http://greenseattle.org/tree-ambassadors/green-lake-wallingford>

Andy Wappler
Washington Forest Protection
Association
Manny and Sarah Weiser
Mike and Erin Welch
Bruce Williams and Gro Buer
Dorothy Yantis
Debbie C. Young and Bruce Dunlop

Preservationist Members (\$500 - \$999)

Anonymous (7)
Eric Aagaard
Rene Ancinas
David Anderson
Paul and Donna Balle
Bill & Melinda Gates Foundation
Joe Blattner
Mary Lou and Peter Block
Boeing Company Matching Gifts
Tom Byers and Carol Lewis
Patti and Richard Case
City of Seattle
Diane Clark
Coughlin Porter Lundeen
Mary and Jim Dunnam
Nicole Faghin and David Spence
Greg Gorder
Hans Griem and Michelle Oh
Ann Gygi and Eric Jolley
Robert Hart
Robert and Phyllis Henigson
Patricia Hickey O'Brien and Edward
O'Brien
Jerry Hillis and Diana Gale
Holly and Jonathan Houser
Jim Houston
Robert and Vera Johnsen
Debbie and Dean Johnson
Kim Jones
Teresa Macaluso
James and Casey Margard
Frederick and Annie Matsen
Judy and Coy McElderry
Craig McKibben and Sarah Merner
Marie Mentor
Chris Moore
Gwendolyn and Patrick Moore
Martha and Eugene Nester
New Belgium Brewing Company Inc.
Greg Nickels
Roger Nyhus
Aaron and Andrea Ostrovsky
Jim and Kathy Pankanin
PDSA
Dale Pedersen
Michele and Kyle Peltonen
Mary Pembroke Perlin and David Perlin
William Pope and Teresa Castner
John and Priscilla Privat
Cynthia Putnam
Regence Employee Giving Campaign
Mark Roberts and Maria
Valdesuso-Roberts
Matthew Roberts and Wady Milner
Sian Roberts
Steven Rogers and Shelly Hall
Elizabeth K. Rorer and Barry Rorer
Charles Royer and Lynn Claudon
Runstad Center for Real Estate Studies
Sheryl Schmeling
Eric and Deborah Shields
Cameron Smock
Scott and Holly Smolinsky
Dale and Carol Sperling
Lucas St. Clair
Peg Staeheli and John Troup
Kent Swanson and Joann Peters

Talasea Consultants
Bill Taylor
United Way of King County
US Charitable Gift Trust
Steve Varga
Michele Vivona
William Wagner
Washington Women's Foundation
Rogers Weed
Bob and Mary Ann Wiley
Jana Wilkins
Heidi Wills and Kobi Yamada
Chuck Wolfe
Wright, Runstad & Company
Joella Yoder
Yokohama Aerospace America, Inc.

Steward Members (\$250 - \$499)

Anonymous (11)
Allstate Insurance Company
Stephen Amorosi and Gayle French
Amorosi
Kermit Anderson
Sidney S. Andrews
Lyle and Betty Appleford
Jim and Liahna Armstrong
Jay Arnold and Mary Beth Binns
Jim and Lesley Austin
Sally and Bradley Bagshaw
Andy Benjamin and Nan Herbert
Julia Bent
Scott Bevan
Dale Blahna
Jean Bobo
Mark Boyar and Gretchen Weitkamp
Doug and Nancy Boyden
Jim Brennan
Paul and Laurie Bride
Phyllis Brunner
Wray and Dorothy Buck
Bonnie and Paul Bunning
Michael G. Burns
Robert and Elizabeth Burns
Canviz, LLC
Todd Carter
Keith Christian
Jim and Evelyn Chumbley
Andy Coe
Michael Collins and Karen Carlson
Brian Collins-Friedrichs
Brenda Cooper
Judy and William Courshon
Stacey Crawshaw-Lewis
Richard Cuff
Kim Dales
Christopher Daley-Watson
Marco and Ryangja de Sa e Silva
Jay and Gaynelle Derr
Emily Dexter
Cheryl and Greg Dietzel
Dan Dixon and Sherry Williams
Jeanne Dryfoos
Barbara Endicott-Popovsky
John Engber and Bergitta Trelstad
Jim and Lynn Erckmann
Mary and Raymond Ferguson
Gerard and Sakiko Flower
Kay and Tuck Forsythe
Maureen Frisch
Ava M. D. Frisinger
David Frockt
Howard Frumkin
Friends of Lincoln Park
Alden Garrett and Charlie
Eriksen
Rick and Nancy Gervais
Jim Gibbons

thank you //////////////////////////////////////

Jennie Goldberg and Peter Stekel
 Susan Golub and Paddy Freeman
 Matt and Pia Graves
 Greene Wealth Mgmt
 Jim and Kathleen Greenleaf
 Max and Helen Gurvich
 Katlin Hanson
 Kimberly Harris
 Susan Heikkala
 Dale and Diane Henningsgaard
 Philip and Cam Herzog
 Ed and Lisa Hewson
 Carol and Peter Hickner
 Susan Holliday
 Eric Holtz and Jean Guth
 John Howell and Claire Powers
 Justin and Anna Howell
 Mary Hsue
 Jim and Diane Huckabay
 Gary and Chris Huff
 Mary Pope Hutson
 Robert Iwamoto
 Howard Jensen
 Kenneth Johnsen and Stacy Graven
 Bethany Johnson
 Robert Johnson
 Jon Jurich
 JustGive
 Keeney's Office Supply
 Meg Kelly
 Seamus Kelly
 Giyen Kim
 John Kincaid
 Frederick Klein
 Mark Kroese
 Robert and Shari Kruse
 Yvonne Kuperberg
 Bradley and Ronda Lagerberg Miller
 Howard Langeveld
 Paul Lawrence
 Greg LeClair
 Daniel C. Lee
 Richard Leider
 Roberta and George Lewandowski
 Chris Leyerle and Mona Forster
 Shannon Loew
 Matt Love and Marie S. Winterlove
 Tom and Megan Luce
 Mark Mason
 Joan McBride and Margaret Meister
 David McCallum
 Brenda McDonnell
 Charles Meade
 Lewis and Julie Merges
 Kit Metlen
 Cathy Millan
 Linda Miller
 Jim Mueller
 Tracy Newman
 Walt Niehoff
 Jeffrey and Margaret Nomi
 Gary Oakland
 Steve and Sally Ohlenkamp
 Thomas C. O'Keefe and Rie Yamazaki
 Leif Ormseth
 Ben and Julie Packard

Paladin Data Systems Corp.
 M T Palmer and Artis Palmer
 Wyk Parker
 Patagonia
 Blair Payson
 Eriann Pearson
 J. Henry Peters
 Rhonda Peterson
 Larry Phillips
 Danielle Platt
 Plauche & Stock LLP
 Dixie Jo and Tom Porter
 Lorraine Irene Potter
 Susan and Bill Potts
 Skip Priest and Patricia A. Bennett
 PSG Washington, Inc.
 Scott Ramsey
 Scott Redman
 Jim Reinhardsen
 Sharon Kay Ricketts
 Paula Riggert
 Matt and Kate Riley
 John and Sarah Rindlaub
 Carl Ringler and Barbara Page
 Jeff Roberts
 George Rolfe
 Steve Rovig
 Harvey Rubinstein and Sharon Hammel
 Jeffrey R. Rueckhaus
 Dave and Hazel Russell
 Kristen Sawin
 Norm and Helen Schaaf
 Shirley Schultz
 Dave Schumacher
 Jan and Jack Showalter
 Susan Sigl
 Deirdre Skillman
 Monty and Mary Lynn Smith
 Laurie Snider
 Richard and Cynthia Sonsteli
 Catherine Stanford
 Doug Steding
 Julie Stein
 Rick Still
 Keith and Crystal Stone
 Dan Stroh and Lucie Huang
 Josh Stuart
 Herbert Stumpf
 Sullivan Conard Architects, PLLC
 Skip Swenson
 Walter S. Tabler
 Joan and Mortimer Thomas
 Steven and Nancy Tochko
 Nancy Tosta
 Kristi Tripple
 James Tune
 James Tupper
 Tweedy Browne Global Value Fund
 Randolph Urmston and Eliza Davidson
 Stephanie Van Dyke
 Edward L. Vervoort
 John Waechter
 Colin and Martine Wagoner
 Marci Wagoner
 Amy Walen
 Teddy Wallace
 Liz Warman
 Washington Technology Association
 Sharlene and Herbert Welsh

Mark Wheeler
 Kent Whitehead
 Steven C. Whitney
 Dave Williams
 Christopher and Sherryl Dee Wilson
 Steve Wood
 Cheryl Woodruff
 Barbara Wright and Dwight Gee
 Craig R. Wyss and Abigail Smith
 Robert Yerkes
 Gary Yngve
 Erin Younger and Edward Liebow
 Mona Yurk

Protector Members (\$100 - \$249)
 Anonymous (28)
 Nancy Abramson
 John Adams
 Vicki Adams
 Genesee C. Adkins
 Jim Adler
 Howard Adlerberg
 Adobe Systems Inc. Matching Gift Program
 Molly Adolfsen
 Shannon Affhalter
 Bruce Agnew
 Gordon and Marilee Ahalt



Volunteer Spotlight: The Gray Family

The 247 acre Gold Creek property, protected by Forterra in 2009, is a beautiful piece of land near Snoqualmie Pass. Its spectacular views, incredible wildlife and recreational opportunities make it a jewel of the region. Gary and Jennifer Gray are the former landowners and stepped up as a family to help continue to care for the property as volunteer Land Stewards. Their son, Kevin, refurbished a trail and built a kiosk on the property for his Boy Scout service project. He recruited a number of volunteers, including his parents, to help him cut back overgrown brush, move fallen trees and haul in a 500 pound sign in for the trailhead. The Gray's had a strong desire to ensure the property retained its natural beauty as well as remained a community asset. Kevin's project helped them all realize they could continue a relationship with the property by being the important eyes on the ground.

Land Stewards play a central role in the stewardship and monitoring of Forterra's conserved lands. Trained by stewardship staff, volunteer stewards monitor properties, document threats, and assist with on-the-ground restoration. For more information about becoming a Land Steward visit forterra.org.



Nancy Ahern
Barbara Akers
Karen Aliabadi
Jon Allen
Steven Allen
Chris Allison
Douglas R. Anderson and Anne M. Noonan
Erin Anderson
Jack Anderson
Karl and Christine Anderson
Kathleen and David Anderson
Phil Anderson
Suzanne and Marvin Anderson
Liisa Antilla
James Apa
Chris Appleford and Marcia Bruno
Jill Arango
Mike Arizona
Susan and Ken Armstrong
Bill and Dee Arntz
Bill and Debora Arthur
Dave and Hae-Sun Asher
Vance Atkins
Bruce and Diane Bachen
Gregory Bader
Bruce Bailey
Brodie Bain
Eric Baker
Sharon Baker
Ben Bakkena
Heather Ballash and Marcus Roening
Lisa Banner
Steve Barger
Martha Barkman
Christopher Barnes and Kate Bedient
Tom Bartholomew and Sarah Mack
Robert and Alma Bass
Kevin and Dawn Bates
David and Elizabeth Baty
Christopher and Cynthia Bayley
Ryan Bayne
Hal Beals
Martha Beard
Mark Beardslee
Heather Beaulieu
David and Sarah Beckerman
Mel Belding and Kate Brostoff
Barbara Bell
Alex Bennett
George Bennett
Trevor Bennett
Stephen Bentsen
Bill Benzer
Linda Berry-Maraist
Dan Bertolet
Lynn and Malcolm Best
Stephen Black
Laura Blackmore
Ellen Blair
Bill Blake
Emiko Blalock
Judy Blanco
Radim Blazej
John Bliss
Mary Ellin Block
Mara and Brian Bohman
Tom Bohman
Megan Bowman
David and Carlotta Boyd
Steve Boyer
Matthew Boyle
Shannon Braddock
Brynn Brady
Jesseca Brand
Lisa Brandt

Donna Brathovde
Mike Brathovde
Louise Bray
Gene L. Brenowitz and Karen Domino
David and Joyce Brewster
James and Sue Briggs
Justin Bright
Carl Brinkley
Rebecca Brinkley
Erika Britney
Chuck Broches
Marilyn Brockman
Sam and Megan Brockway
Rita Brogan
Matt Broman
Nathan Brown
Lindy and Jay Bruce
Maura Brueger
Joanna A. Buehler
Bob Bugert
Pipo Bui and Sebastian Simcs
Alan and Ruth Bunin
Jim Burgess
Joan Burlingame
Bob Burns
Corinne Burr
Bill Butler and Barbara Krieger-Brockett
Allegra Calder
Robert and Sharon Camner
Art Campbell
Eric Campbell
Sally Campbell
Dennis Canty
Dick Carkner
Amy Carlson and Kalman Brauner
Gene Carlson
Reuven and Wendy Carlyle
Deanna Carpenter
Jorge Carrasco
Linda Carriveau
Brian and Lisa Carroll
Glynis Carrosino
Catherine Carter
Cecelia Carter
Suzanne Cartwright
Thomas Cartwright
Brendon and Kerri Cechovic
Timothy Y. Ceis
Leda Chahim
"Susan Champlain"
Adam Chapman
Jim Chapman
Natalie Cheel and Corey Brennan
Vinaya Chepuri
Shane Cherry
Isabel Childs and Debbie Campbell
Rich Chwaszczewski
Jim Ciecko and Jo Anne Myers-Ciecko
Rosemarie and Terrence Clark
Shamra and Eric Clark
Melody A. Clemans
Judy and Bruce Clibborn
Richard and Rita Rae Cloney
Ainsley Close
Cathy Cloutier
Stephen Cobert
David Coburn
John Cochran
Candace Coe
Richard G. Cole
Nate and Sara Cole-Daum
Gene Colin
Theodore and Patricia Collins
Peter Conard and Laura Appell
Richard Conlin

Joel Connelly
Peter Constable
Dave A. Cook
Jeff Coombs
Greg Corbin
Nathaniel Cormier
John G. Corso
Fiona Cox
John Creighton
Crystal Creson-Carter and John Carter
Debra Crespin and Lois Harris
Joan Crooks
Cropp Co-Op/OV Pacific
Northwest
Bruce Cross
Erika Croxton
Sara Crumb
Joshua Curtis
Ken and Rebecha Cusack
Chris Czieszla
Lisa Dabek
Scott and Nancy Dahlquist
Rose Marie and David Dale
Richard and Sherri Daly
Bruce Dammeier
Amy Danberg
Sophia Danenberg
Bruce Danielson
Rosemary Daszkiewicz and Guy Thomas
Bob and Molly Davidson
John W. Davis
Joth Davis
Karen Davis
Patrick and Verrelle Davis
Virginia Davis
Mark Davison and Kathleen Galloway
Deva Dawson
Jim and Karan Dawson
Danielle De Clercq
Jenn Dean
Mike Dederer
Sandi DeJoseph
Mike Deller
Andrew Dempsey
Rory Denovan
Paul Desilet
Paul R. Detmer and Kathleen L. Roach
Bill Dewey
Peter Dewey and Marian Valentine
Frank Dibiase
Tamara DiCaprio
Mary Dickinson
Ryan and Ann Dicks
Patti Dill
Jana Dilley and Chris Holstrom
Martha J. Dinwiddie
Kimberly Doman
Jeanette Dorner
Mark and Mindy Doumit
Mendy Droke
Susan Drummond
Peter Drury
Michael Dryfoos and Inga Jansons
Richard Du Bey
Steve Dubiel and Sarah Richardson
Darby and Stephen Ducomb
Roland and Phyllis Ann Dukes
David Dunneback
Steve and Mary Elayne Dunphy
Patricia Duquet
Rita and Harlan Durand
T. Ryan Durkan
Andrea Dwyer
Barbara Earl

Marianne and John Earl
Emelie East
Jim Ebbert and Catherine Andres Ebbert
David Eckert
Jeremy Eckert
Deborah Eddy
Christian and Donna Eggen
Sherell L. Ehlers
Duke Eide
Robert and Ingrid Eisenman
Gerald Eller
Rich and Diane Elliott
Employees Community Fund of Boeing Puget Sound
Eric Enquist
Becky Erickson
Eddie Espinosa and Ann Milliron
Eldon and Carol Estep
Dan Evans
Charles Everett
Owen Fairbank
Giselle Falkenberg and Rockwell Moulton
Marte Fallshore and Dale Brubaker
Kimberley Farley
Ben Farrow
Andrea Faste
Jeremy Febus
Stephen and Katherine Feldman
Jim Feldmann
Virginia Felton
Ruth Ferris
Jake Fey
Mary Fiala
Linda Finn
Terry Finn
Susan Finneran
Chris Fiori
Sandy Fischer
Judith Fisher
Steve Fisher
Mike Flanagan
June Fletcher
Kathy Fletcher
Bryan Flint
Courtney Flora
Gary Fluhrer
Martin Flynn
Kittie Ford
Marlene and David Foster
Kirsten Frandsen
Jerry and Phyllis Franklin
Bart and Esme Freedman
Bryan Friend
Alex Fryer
Susan and Albert Fuchs
Kevin Futhey
Clare Gallagher
Rory Galloway
Antonio Galvan
Jodie Galvan
Laura and Grant Gardner
Roger and Kris Garratt
William and Lindy Gaylord
Bonnie and Jeffrey Geers
Rob Gelder
Sam Gibboney
Anthony Gibbons
Bill and Roxy Giddings
Steven Gilbert
Robert Girvin
Kevin Godbout
Jean Godden
Tom Goeltz
Dave Goelsing
Robert Goforth and Randy White
David and Lisa Goldberg

thank you

Aron and Lisa Golden
 Peter Goldmark and Wendy Goldmark
 Marty Goodman
 Robert D. Gordon
 Pat and Dennis Gossler
 Carol and Allen Gown
 James Graham
 Gabriel Grant
 Betsy Grava
 Mark Gray
 Dan Grayuski
 Sara Green
 Duncan Greene
 Christine Gregoire
 Mike Gregoire
 Chris Gregorich
 Deanna Gregory
 Frank Gregory
 Bill Greuel
 Sue and Bud Grieff
 Martinique Grigg
 Ann Grodnik
 Jerry and Carol Gronfein
 Bruce Gryniewski and Ann Anderson
 Christian and Julie Gunter
 Kamuron Guroi
 Paul S. Gustie
 Andy and Debby Guy
 Karen Guzak
 Barbara Guzzo
 Randolph Haagens
 Jane Hadley and Randy Robinson
 Karen and Richard Hadley
 Tom Haensly
 Jim and Carol Haggerton
 Jane Hague and Ed Springman
 Don and Heather Halabisky
 Will Hall
 Nathan Hambley
 Mike Hamm
 Paula and Alan Hammond
 Steven Haney
 Lloyd Hara
 Donald and Gayle Harris
 Will Hartmann
 Troy Hartzell
 Chris Hatscher
 Robert B. Hauge
 Paul Hausmann
 Jamie and H.J. Havens
 Brian Hawkins
 Neil and Ann Hawkins
 Britt Heath
 Margaret Heldring
 Gregory Heller
 John and Sandi Hempelmann
 Susan Hempstead and Ben Hempstead
 Jan Hendrickson
 Timothy and Catherine Hennings
 Andy Hill
 Corinne and Dave Hill
 Bill Hinkle
 Todd and Pam Hinnen
 Kenneth Hite
 Matt Hoffman
 Richard and Julia Hoffmeister
 Carolyn Hojaboom
 Cynthia C. Holdren and Robert Gold
 Bruce Holms

Abigail Hook
 Todd Hooper
 Carolyn Hope and Paul Hope
 Mike Hope
 Chris Houck
 Charlie Howard
 Russ Howell
 Jurgen and Susan Huck
 Mary Hughes Skinner
 Heidi Hughes
 Lee Anne Hughes
 Bob Hull
 Julie and Gordon Hungar
 Steve and Marjorie Hunt
 Ross Hunter
 Jennifer Huston
 Jim Hutchinson
 David Hymel
 Peter H. Jackson
 Mark Jacox
 Brian and Traci Janssen Foundation
 Fred Jarrett
 Robin S. Jenkinson
 Deborah Jensen and Steven Malloch
 Lisa Jensen
 Sue and Jim Jensen
 Anne Johnson
 Gary Johnson
 Gregory Johnson
 Randy Johnson
 Brewster Johnston and Kris Romstad
 Philip and Laurie Jones
 Ammen Jordan
 Lorna Jordan
 Mike Jostrom
 William Justen
 Dysa Kafoury
 Robert Kaplan and Margaret Levi
 K-Valley Tree Service
 Carl Kasselbaum
 Arthur Kaufman
 James Keating
 Jeanne Keenan
 Larry Keil and Kay Peters
 Thomas Kelly
 Athena Kennedy
 Mariah Kennedy
 Julie Keough
 Michael Kern and Ellen Eskenazi
 Marie A. Kernie
 Jason Kidd
 Tom and Helen Kilbane
 Grace Kim
 Hannah Kinmoth Schultz
 John Kinsella
 Ben Klasky
 Linden Klein
 Ron and Margo Klein
 Marty Kneeland
 Bruce and Linda Knowlton
 Brian and Ginger Knox
 Jim Kodjababian and Maria Denny
 Doris Koo and Edward Chu
 Fred Koontz
 Cary Kopczynski
 Scott Koppleman
 Donald Kraft
 Jim A. Kraft and Dominique P. Posy
 Jim and Brenda Kramer

Kristi Kramer
 Kathy J. Kravit-Smith
 Penelope Kriese
 Michelle and William Krippaehne
 Ellen Kritzman
 Ken Krivanec
 Craig Krueger
 Sarah Krueger
 Damon Kruger
 Walter Kuciej and Maryann Meaney
 Deborah Kuykendall
 K-Valley Tree Service
 Charles Kyle
 Natalie LaBerge
 Patrick Lamb
 Kathy and Daryl Lambert
 Land Development Advisors
 Karen Landen and Dean Stahl
 Bill and Molly LaPatra
 Rob Larsen
 Maja Larson
 Matt Larson
 Tory Laughlin Taylor
 Terry Lavender
 Anson Laytner
 Jenn Leach
 Robert Leach and Catherine M. Otto
 Paul Leavitt
 Marty Leith
 M.A. Leonard
 Colette Lescantz
 Al Levine
 Doug Levy
 Andy Lewis
 Brenda Licata
 Martha Lindberg
 Hal and Gloria Lindstrom
 Rand Little
 Lynn Livesley and Kevin O'Neill
 Nancy Locke
 George and Shirley Lockeman
 Scott Lockert
 Marty Loesch
 Donald W. Logan
 Meredith Lohr
 John Lombard and Jennifer Haykin
 Susan Long
 Craig Lorch
 Bruce Lorig
 James Lovell
 Mike and Mary Lowry
 Doug Luetjen
 Sheila Lukehart and James Brinkley
 Larisa Lumba
 David and Louise Luthy
 Mark P. Lutz
 Pete and Olga Lymberis
 Patricia Lynch and Frances Ford
 Kristin Lynett
 Doug MacDonald
 Jennifer Mackay
 Peter Maier and Elizabeth Tennant
 David and Peggy Mainer
 Tim Manion
 Michael Mann
 Jay Manning
 Paul Manzer
 Andy Marcelynas
 John Marchione

Steve Marek
 Hank Margeson
 Joe Marine
 Todd Marker
 Carl and Haruko Marquardt
 Bill Marre
 Ann Martin
 Chris Martin
 Marsha and Larry Martin
 Nannette Martin and Michael Daley
 Nicole Martineau
 Brice and Bridgette Maryman
 Steve Matthews
 Dennis and Gwenn Maxfield
 Marcie and Steven Maxwell
 Colleen McAleer
 Marie McCaffery
 Pat McCarthy
 Pat and Claudia McClain
 Eric McClung
 Andrew McCormick
 Tyler McCoy
 Deirdre and Jay McCrary
 Mary McCumber
 Jane and Rich McCurdy
 James A. McDonald
 Kevin McDonald
 Brian and Carina McGinnis
 Tim and Jeannie McGinnis
 Peter and Barbara McGrath
 Michael McGuire
 Gordon McHenry
 Jim McIntire
 Ross and Candice Mclvor
 Jeanette and David McKague
 Colene McKee and Bill Denzel
 Gates McKibbin
 Bernie McKinney
 Ann S. McNeil
 Neil and Nancy McReynolds
 Sharonn Meeks
 Matt Mega
 Bruce and V. Gladys Mello
 Ryan Mello and Jerry Hallman
 Meridian Environmental, Inc.
 Kurt Merriman
 Sharon Metcalf and Randy Smith
 Milenko Enterprises
 Louise and Stafford Miller
 Paige Miller
 Shyla Miller
 Dave Mills
 Cindy Mitchell
 Lori Miyasaki
 MJ Durkan Inc.
 Sara and Paul Mockett
 Cole Monnahan
 Lori Montoya
 Lew Moore
 Ian Mooser
 Brandon Morgan
 Darren Morgan
 Geoff Morgan
 Harry Morgan and Lesley Morgan
 Jennett Morgan
 Alan Moritis
 Matt Mormino
 Michael Moroney
 Luis Moscoso
 Mike Mosman
 Alison Moss
 Katie Moxley



Mark Mullet
Dan Munn
Michael J. Murphy
Joe Murray
Laura Musikanski
Barbara and Daniel Myers
Hank Myers
Meg A. Myhre
Mary Myslewicz
Ralph Naess
Chris Napier
Sharon Nelson
Michael Nesteroff and Kimm
Viebrock
Network for Good
David Neu
Craig Nevil
Chip Nevins and Amy Snover
Doru Nica
Kerry and Gwendolyn Nicholson
Dan Nickel
Dave and Laura Nicol
Dean Nielsen
Keith Niven
KEVIN NOHL
Lois H. North
Warren Northrop
E Macarthur Noyes
Brenda and Art Nunes
Todd Oberg
Reba Olsen
Thomas Olson
Olympic View Investments
Mike Omura
Christina Orr-Cahall
Tina Orwall
Steven Otto
Nancy Ousley
David E. Overton and Katherine
Steuart
Ralph and Peggy Owen
Stephani Owens
Ron Paananen
Pacific
Mark Parker and Laura Smith
Ron Parker
Craig Parsons
Penelope and Gerald Peabody
Beth Pearson and David Zane
Kent and Michelle Pearson
Bruce Peart
Virginia Pedreira
Miguel Perez-Gibson
Penny Peters
Elizabeth Peterson
Lorrie Peterson
Robert and Elaine Phelps
James and Arlene Phillips
Nathan Phillips
Simon Philp
Aaron Pickus
Sandra and Greg Pinto de Bader
Joanne Polayes and Perry Wien
Jessica Powers
James and Peggy Price
Patricia Prinz
Mike Pruett
Linda A. Pruitt
Bill Ptacek
Julia Putnam
Paul and Barbara Quay
Natalie Quick
Alan Rabinowitz
Patty Radeke
Chip and Tina Ragan
Charles Raines and Cindy Seramur
David H. Ramsay and Carol E.
Cooper

Thomas and Melissa Ranken
Larry Ransom and Gail Ransom
Andrew Ratzke
Ethan Raup
Kit and Christopher Rawson
Norm Rea
Robert Regan
Sarah Reichard
Wayne Reisenauer
Kelly Rench
Chris Requea
Sheila Retherford
RH2
Norman B. Rice
Bill Richards
margaret richardson
Steve Richmond
Sarah Rick Lewontin and David J.
Lewontin
Kelly and Ben Rider
Grant Ringel
Sol Riou
Dan Ritzman
Judy Roan and Ron Reeder
Joe Roberts
Paul and Marianne Roberts
Sonny Robins
Fred Romano
Harry Romberg
Jennifer Romich
Stephen and Hazel Roos
Jon Rose
Judy Rosen
Mike Rosen and Sharon Howard
Mike Rosenfeld
Roslyn Sunday Market
Bill Ross
Brian and Kim Ross
Kevin Rowland
Bob Royer
John Rudicil
Greg and Emily Rutar
Jill Ryan
Adrian and M.A. Ryneveld
Cindy and Cody Ryu
Ms. Lori Safer
Susan and Bruce Saffery
Kyle Samuels and Chris Osborn
Jane Sanders
Ann and Wayne Sandstrom
P.J. Santos
Jay A. Satz
Marsha Savery
Holly Sawin
Don Scanlon
Gabriel Scheer
Gisela and Hugo Schimmelbusch
Brent Schmidt
Janet Schmitt
Barbara Schneider
Pat Schneider
Morgan Schneider
Jennifer and Gary Schroder
William Schwartz
Ted and Mary Ann Schwarz
Michele Scoleri
Donald Scott
Dave and Vergia Seabrook
David and Anne Seago
Seattle Garden Club
Barbie Seifert
Mike Seifert
Dottie and John Selby
Joel Selling and Nancy Truitt Pierce
Sue Selman
Patricia J. Serie and Jay
Brueggeman
William Severson and Meredith Lehr

Steve T. Seward
Gary Sexton and Karen Davis
Scott Shapiro
Douglas and Alice Sharp
Mike Shaw
John and Cynthia Shea
Steve Sheehy
Amanda Shellenberger
Shawna Sherman
Marilyn Sherron
Barbara and Richard Shikar
Michael Shiosaki
Steve Siegel
Zach Silk and Edie Gilliss
Dan Silver
Charles A. Simenstad and
Stephanie Martin
Jeff Simon
Bob and Maria Sims
Lynn Siniscalchi and Susan Waller
Matthew Sino
Chuck Sitkin
Lucy Sloman
Blake Smith
Broderick Smith and Holly Smith
Dale and Susan Smith
Jared Smith and Karen Daubert
Jason Smith and Teresa
Torrance-Smith
Lauren C. Smith
Marc Smith
Matt Smith and Lynn Cohee
Rachel Smith
Kris Snider
Gretchen Sorensen
Sarah Spaeth
Derek Speck
John Speirs and Julie DeRose
Randy Sperry
Larry Springer and Penny Sweet
Julie Stangell and George Bennett
Court Stanley
Jenness Starks
Ray Stephanson
Cullen Stephenson
Carolyn Stevens
Nancy Stevens
Matt Stevenson
Barbara and Thomas Stever
Ruth Stevick and Lynn L. Gracey
John and Sherry Stilin
Martin Stoddard
Joe Stohr
Scott Stolnack
Pete Stone
Kristin Storm
Peter Streit
Ted Sturdevant
Jo and Terry Sullivan
Carly Summers
Brit-Simone Sutter
Sandi Swarthout
BrynDel Swift
Hayes Swinney and Ryan J. Alger
Bonnie and John Tabb
Tahoma Chapter of Back Country
Horsemen of Washington State
Donna Tait
Dave Tarshes and Deborah
Kerdeman
Kate Tate
Jeff and Sandy Taylor
John Taylor
Paul Taylor
Frank Terrill
Katy Terry
Margaret Terry
Andrew Thibault

Rahul Thombre
Michael Thompson
Eric Thorsen
Tricia Tiano
Danielle Tiedt
Bill Tirrill
Susan Titcomb
Jeffrey and Sharon Todhunter
Nathan and Katherine Torgelson
Aaron and Meghan Toso
John Traeger
Arun and Ellen Trikha
Daniel Trimble
Bill Trimm
Kurt Triplett
Frances F. Troje
Lewis Trout
Christie True and Lawrence James
Karen True
Craig and Esther Trueblood
Teresa Turpin
United Way of Snohomish County
Lauren Urgenson
Manca Valum
Auky Van Beek and Celia Kennedy
Frank and Leigh Anne Van Dusen
Alison Van Gorp
Jerry and Marsha Vandenberg
Andrea Vanderlende
Vashon - Maury Island Land Trust
Diana Vergis Vinh
Gwen Vernon
Sol Villarreal
Mark Villwock
Sally Vogel
Martin Volken
Tom von Schrader
Penny and Morris Wade
Pat Wadsworth
Reed and Christina Waite
Brad Wakeman
Elizabeth Walker
Marisa Walker
Janet Wall
Mike Waller and Kate Grieshaber
Lisa Walrath
Robert A. Warfield
Barbara Warren
Craig and Eva Weaver
Cliff Webster
Debbie Wege
Kathie and Randy Weibel
Mary D. Wellborn and John R.
O'Brien
John Wells
Bryan and Katie Welsh
Neil Werner
John West
Clay White
Philip C. White
Don Whitehouse
William Whitman
Dan Wiebe
Laura Wigren
JT Wilcox
Michael Wilkins and Suzanne Olson
Christopher M. Williams
Eric Williams
Stuart Williams
Terry and Sue Williams
Frances Williamson
Scott Williamson
John Arthur Wilson
Richard and Catherine Wilson
Keith Winzenried
Josh Witherell
Kathy and Clancy Wolf
Wanda Wong

thank you //////////////////////////////////////

Carolyn J. Wood
Phil Wood and Judy Mahoney
Victor and Kathleen Woodward
Leslie Wright and Sheryl
Westergreen-Berni
Yancy Wright
Corrie Yackulic
Ted Yackulic
Sung Yang and SoYoung Kwon
Henry Yates
Tay Yoshitani

Tributes

In Honor of Jean Amick
In Honor of AMLI Residential
Properties, L.P.
In Honor of Robin Appleford
In Honor of Martha Beard
In Honor of Keith Binkley & the
Jackson License
Implementation Team
In Honor of Katie Cava, my
recycling guru
In Honor of Briana Marie
Chwaszczewski
In Memory of My late husband
Robert W. Clark
In Honor of Gigi Coe and Mike
Garland
In Memory of Jonathan Cox
In Honor of Sam & Barbara
Davidson
In Honor of Karen Brown Davis
In Honor of E A Dixon
In Memory of Don Dodson
In Honor of Matt Dressler
In Honor of Gene Duvernoy for
the Green City Program
In Honor of EFFRA
In Honor of Jim Ellis
In Memory of Debbie Everette
In Memory of Eric William Faste
In Memory of Jerold Ferrell
In Honor of Gaia
In Honor of Emma & Maci
Gunter
In Memory of Anne Hempstead
Herrmann
In Memory of Doris Huff
In Honor of Margaret Knutson
In Memory of Phil Kowing
In Memory of T J Langley
In Memory of William & Mary
Little Foundation
In Memory of Ted Lomax
In Honor of Diana MacDonald
In Memory of Martha Mainer
In Honor of Michael Maloney
In Honor of Ryan Mello
In Honor of Middle Green River
Coalition
In Memory of William J. Minsch,
Jr.
In Honor of Susan Mitchell
In Honor of Isaac & Stella Nolte
In Honor of Casey O'Conner
In Honor of Pearl Jam's Carbon
Mitigation
In Memory of Frank & Marie
Ponzio
In Honor of Frank Pritchard
In Honor of Kelley and Wayne
Quirk

In Honor of Wayne Quirk
In Honor of Epifania Rapozo and
family
In Memory of Michael Reagan
In Honor of Joseph R. Roberts
In Honor of Robin and Sue
In Honor of My daughters,
Samantha & Lauren
In Honor of Keena Sanna
In Honor of City of Snohomish
for their Transfer of
Development Rights Program
In Honor of Rachel Stampfer
In Honor of Carl M. Stevens
In Memory of Carl Stone
In Honor of Dan Stonington
In Memory of Gwen E. Stumpf
In Honor of Maryanne Tagney
Jones
In Memory of Dr. Douglas A. Tait
In Honor of Henry Van Dyke
In Honor of Harry and Mary
Wappler
In Honor of Mark Weisendanger
In Honor of Ann Williams
In Honor of Dan Williams
In Memory of Major Woody
In Honor of Debbie Young &
Relicensing and
Implementation Group

In-Kind

Anthony's Restaurants
Audio Visual Meeting Solutions
Stephen Cooper
Jim Corson
Laura Marchbanks Photography
Konrad Liegel and Karen Atkins
Larisa Lumba
Mac Donald Distilleries
Bonnie Miller
Mithun
Olympic Nursery - Woodinville
Premier Graphics
REI, Inc.
Rosso Gardens
Taylor Shellfish Farms
Margaret Thouless
Wilday Scott and Company
WSU Mason County Extension
Zippcar

Matching Companies

Adobe Systems Inc. Matching
Gift Program
Aetna Foundation
Bill & Melinda Gates Foundation
Matching
BlackRock Matching Gift
Program
Boeing Company Matching Gifts
Boeing Employees Credit Union
Bullitt Foundation
Google
HSBC Philanthropic Programs
K&L Gates
Kraft Foods Foundation
Lucky Seven Foundation
Microsoft Corporation
Microsoft Matching Gifts
Program
Nintendo of America, Inc.
Plum Creek Timber Company

Puget Sound Energy
Regence Employee Giving
Campaign
REI, Inc.
The Seneca Real Estate Group,
Inc.
Symetra Financial
The Russell Family Foundation
Union Bank Foundation
United Way of King County
US Bancorp Foundation,
Matching Gifts

Legacy

Karl and Christine Anderson
Virginia Anderson
Sharon Baker
Lucius and Nancy Biglow
Peggy Bill and Stephen Sullivan
Bruce and Kim Coe
Priscilla Collins
Michelle Connor and Mark
Levensky
Robert and Martha Cram
Debra Crespin and Lois Harris
Barbara Davidson
Steve Durrant
John Frederic
Steven and Shirley Fuller
Stanley and Marion Gartler
Cheryl Germany
Thelma and Charles Gilmur
David and Melinda Gladstone
John and Margo Gooding
Paul and Laura Gould
Pamela Gross
Barbara and Clayton Haberman
Willa and Walt Halperin
Jerry and Linda Henry
Antonin and Sarka Hruby
Anthony and Joanne Ishisaka
Jane Clapp Living Trust
Cindy Jennings
Paul Kipper
Charles D. Laird and Judy H.
Shepherd
John and Jayne Laird
Michael Laird
Terry Lavender
Carsten and Cristi Lien
Roger Lowe
Joan D. MacDonald
Mimi MacDonald
Avron Maletzky
McDanel Land Foundation
Jack and Barbara Miller
Gwendolyn and Patrick Moore
Lloyd Morse
Bill and Mary Ann Mundy
Ernest and Dorothy Neville
Nancy and Don Pearson
Frank Pritchard
Linda J. Pym
Donald Robinson
Tyrrell Rockafellar
Jim Roush and Cynthia Wayburn
David Russell
Marilyn Sandall
John Sangster
Tricia Scanlon
Ruth Shimondle
Hillary Shurtleff
John Spehar

Rich and Candy Stewart
Donna Tait
Sonia Thompson and Bruce
Barnbaum
Mark Tipperman and Lorna
Williamson
Diane E. Walkup
Janet Wall
Harrison and Melissa Watts
Rich and Ruth Williams
Carolyn J. Wood
Morton and Martha Wood

Principal Sponsor

K&L GATES

Premier Sponsors (\$15,000 +)



Leadership Sponsors (\$7,500-\$9,999)



Photo Credits

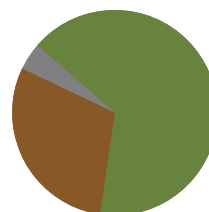
Cover: Bradley Hanson,
Matthew Simek
Pg. 4: Keith Lazelle
Pg. 6-7: Kitsap Forest and Bay,
Don Willott
Lake Roesiger,
Todd Parker
I-90 Wildlife Corridor,
Charlie Raines
Jacobs Point,
Joe Sambataro
Cedar River,
Judy Blanco
Morse Wildlife Preserve,
Todd Parker
Pg. 8: Community Garden,
Skye Schell
Landscape Conservation
Local Infrastructure
Program,
Margot Cheel
Pg. 11: Erica Simek
Pg. 17: Andrea Mojzak
Pg. 18: Gary Gray
Back: Jeff McGraw

financials

BALANCE SHEET	12/31/11	12/31/10
Current Assets	\$10,326,066	\$11,349,156
Conserved Land & Easements	\$24,587,089	\$24,109,896
Other Assets	\$378,491	\$403,585
Total Assets	\$35,291,646	\$35,862,637
Current Liabilities	\$623,275	\$756,495
Long Term Liabilities	\$229,619	\$221,624
Total Liabilities	\$852,893	\$978,119
Unrestricted Net Assets	\$26,729,872	\$26,901,921
Board Designated Net Assets	\$4,558,408	\$5,436,867
Temporarily Restricted Net Assets	\$2,246,656	\$1,735,599
Permanently Restricted Net Assets	\$903,816	\$810,130
Total Net Assets	\$34,438,753	\$34,884,518
Total Liabilities and Equity	\$35,291,646	\$35,862,637

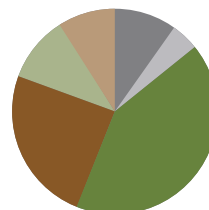
WHERE OUR FUNDING COMES FROM

● Government Grants & Contracts	61%
● Philanthropic Revenue	37%
● Other Project Revenue	2%



WHERE WE SPEND OUR FUNDS

● Acquisition of Lands & Easements	43%
● Conservation/Stewardship/Education	29%
● Management	10%
● Communities	8%
● Fundraising	6%
● Outreach & Marketing	4%



CONTACT US

forterra.org

For our work in the Central Puget Sound and for organization-wide questions, please contact our main office in Seattle:
615 Second Avenue, Suite 600
Seattle, WA 98104
T 206-905-6900
F 206-292-4765

For our work in the South Sound area, please contact our office in Tacoma:
1119 Pacific Avenue,
Suite 1300
Tacoma, WA 98402
T 253-274-4955

For our work in the Central Washington area, please contact our office in Ellensburg:
409 North Pine Street
Ellensburg, WA 98926
T 509-962-1654



Forterra is the first land trust in the state to be accredited by the Washington, D.C.-based Land Trust Alliance.

NEW LEAF PAPER®

ENVIRONMENTAL BENEFITS STATEMENT

of using post-consumer waste fiber vs. virgin fiber

Forterra saved the following resources by using 560 pounds of Imagination, made with 100% recycled fiber and 100% post-consumer waste, processed chlorine free, designated Ancient Forest Friendly™ and manufactured with electricity that is offset with Green-e® certified renewable energy certificates.

trees	water	energy	solid waste	greenhouse gases
7 fully grown	3317 gallons	3 Million BTUs	210 pounds	736 pounds

Calculations based on research by Environmental Defense Fund and other members of the Paper Task Force.
www.newleafpaper.com

