



WADAJIR

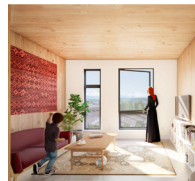
96 FAMILY RESIDENCES & SOUQ
IN THE HEART OF TUKWILA, OPENING IN 2021

WADAJIR
means
“together”
in Somali.

Welcome to Wadajir

Wadajir is a place you and your family will love to call home. Located in the heart of fast-growing Tukwila, Wadajir offers 96 units of family housing at an attainable price. Featuring a first-floor community market for local small businesses, an abundance of units with two and three bedrooms and a park where friends and families can gather, Wadajir is designed to be a place for community to thrive.

As Tukwila grows and changes, Wadajir’s co-op ownership model will be an anchor for our families to flourish.



BEAUTIFUL & AFFORDABLE

A new sustainable building technology called Cross Laminated Timber enables high-quality construction at an attainable price.



DESIGNED FOR COMMUNITY

The community marketplace, or Souq, is host to over 20,000 sq ft of small businesses and community services.

Interested in living or being a vendor at Wadajir? WADAJIRTUKWILA.COM

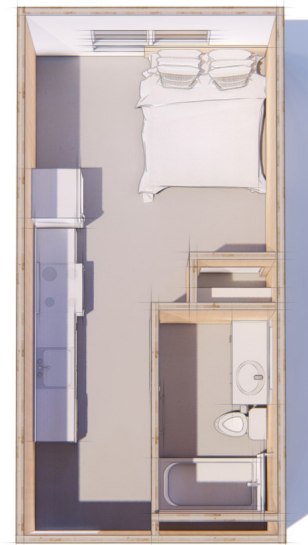


Wadajir seen from Abu Bakr Masjid across Tukwila International Boulevard.

Wadajir Residences

Own a gracious and beautiful space for your family at Wadajir. A majority of the residences are two or three bedroom units. Each residence features high-quality construction, exposed natural wood and ample natural light.

Wadajir is a permanently affordable cooperative under Washington law allowing residents to avoid the hassles and price inflation of renting.



STUDIO: 287 sq ft



2 BEDROOM: 893 sq ft



1 BEDROOM: 593 sq ft



3 BEDROOM: 1186 sq ft



Interior rendering of a Wadajir residence



The Souq

The first floor of Wadajir is home to a 20,000 sq ft community market for local businesses. At street level, outdoor spaces invite you and your neighbors to gather.

LEFT: Families shop in the Souq as light streams in through floor-to-ceiling windows.

ABOVE: People socialize and relax in the gathering space outside.

Tukwila

Located in the heart of bustling Tukwila, Wadajir's street-level community marketplace offers a world of goods, flavors and culture. Only 10 miles from downtown Seattle, nearby transit connects you easily to work and play.



EXPLORE TUKWILA

Wadajir is at the center of one of Puget Sound's most exciting and fast-growing cities.



WALKING DISTANCE TO SCHOOLS

Wadajir is across the street from Abu Bakr Academy and only two blocks from Foster High School and Showalter Middle School.



CLOSE TO COMMUNITY

The residences and Souq are within walking distance of Namaste Community Garden and the new Tukwila Public Library.



CLOSE TO TRANSIT

Bus service at your front door connects you to downtown Seattle, Sea-Tac and nearby Tukwila Light Rail Station within minutes.



Modular Construction

HIGH QUALITY AT AN ATTAINABLE PRICE

Wadajir will be built with an innovative new sustainable wood product called Cross Laminated Timber (or CLT). CLT is made by gluing layers of lumber together, with each piece oriented perpendicular to the adjacent layer. The resulting material is stronger than concrete, pound for pound. Because CLT can be prefabricated before reaching the job site, lead times and construction costs can be greatly reduced. Above all, CLT creates a comfortable and beautiful living space.

Interested in living or being a vendor at Wadajir? WADAJIRTUKWILA.COM

WADAJIR

96 FAMILY RESIDENCES & SOUQ IN THE HEART OF TUKWILA, OPENING IN 2021

For more information or to sign up for updates, please visit
WADAJIRTUKWILA.COM OR CALL 206.905.6937.

WADAJIR IS A PROJECT BY FORTERRA, a nonprofit that secures places—urban, rural and wild—that are keystones of a sustainable future. Having acquired the land with its Strong Communities Fund, Forterra is now working closely with community members and public-spirited architects, engineers and developers to create a place where people, families and small businesses can put down roots and flourish.

FORTERRA

PROJECT PARTNERS

Abu Bakr Islamic Center
COMMUNITY PARTNER

Walsh Construction
PRECONSTRUCTION SERVICES

Mithun
PROJECT ARCHITECT

MKA
CIVIL ENGINEER

ASPECT
STRUCTURAL ENGINEER

Styxworks
STRUCTURAL CONSULTANT

Forterra Strong Communities Fund
LANDOWNER