

HOW TO BE A GOOD LAND STEWARD IN SNOQUALMIE

The Green Snoqualmie Partnership encourages residents and visitors of the city of Snoqualmie to be good stewards of the land. Being a good steward means to manage, care for, and look after the land we live on. The Green Snoqualmie Partnership needs the help of everyone to accomplish our goal of having a healthy forests and natural areas throughout our community.



PHOTO: JIM AVERY

Questions? Contact city of Snoqualmie Urban Forester Phil Bennett
pbennett@snoqualmiewa.gov | www.greensnoqualmie.org



STEWARDSHIP AT HOME

Plant Trees

Trees provide habitat, mitigate storm water, and reduce pollution. They also have economic and health benefits for our community.



Choose the Right Tree

Snoqualmie Ridge has poor soils. Here are a few examples of trees that do really well in landscaped areas.



Pines

- **Shore Pine**
(*Pinus contorta*)
- **Austrian Pine**
(*Pinus nigra*)



Oaks

- **Red Oak**
(*Quercus rubra*)
- **Pin Oak**
(*Quercus palustris*)
- **Skinny Genes® Oak**
(*Quercus robur* X *alba* "Skinny Genes")



Cherries

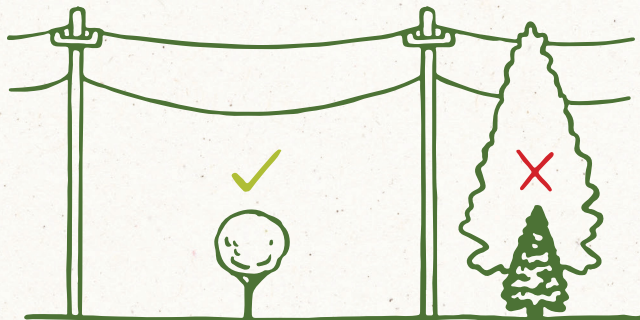
- **Snowgoose Cherry**
(*Prunus* "Snowgoose")
- **Royal Burgundy Cherry**
(*Prunus serrulata* "Royal Burgundy")



European Hornbeam (*Carpinus betulus*)

Before You Plant—Think Ahead

Consider how big a tree will be in 20, 50, or 100 years. Avoid planting tall varieties under power lines.



Give wide-spreading varieties plenty of distance from building foundations.



Remove Invasive Species

Invasive species are plants that have been introduced to this region and grow aggressively. They have disastrous long-term impacts on landscapes, as they can choke out natural areas and prevent the development of future forests. Removing these plants from your yard will help prevent them from spreading into our natural areas.

Common Invasive Species Weeds

The following plants are weeds both in our forests and in your landscape, remove them early so they don't establish in your yard.



Himalayan blackberry
(*Rubus armeniacus*)



Herb Robert
(*Geranium robertianum*)



Bittersweet nightshade
(*Solanum dulcamara*)



**Morning glory/
field bindweed**
(*Convolvulus arvensis*)

Landscape Plants to Avoid

These are common landscape plants sold in nurseries and are planted in yards but they can spread from yards into natural areas. Avoid planting them on your property and consider removing them. The following page offers great native alternatives.



English ivy
(*Hedera helix*)



Yellow archangel
(*Lamium galeobdolon*)



English holly
(*Ilex aquifolium*)



Butterfly bush
(*Buddleia davidii*)



English/Portuguese Laurel
(*Prunus laurocerasus*)



PHOTO: HANNAH LETINICH



Landscape with native plants

Choose native plants to provide habitat for local wildlife and to prevent introducing weedy invasive plants to nearby natural areas.

Support local garden stores that feature local native plants, and ask your favorite nursery to provide more native choices.

Here are a few great options for planting in Snoqualmie.



Sword fern
(*Polystichum munitum*)



Salal
(*Gaultheria shallon*)



Oregon grape
(*Mahonia aquifolium*)



Bleeding heart
(*Lamprocapnos spectabilis*)



Evergreen huckleberry
(*Vaccinium ovatum*)



Hardhack/Spirea
(*Spiraea douglasii*)



STEWARDSHIP ON PUBLIC LAND

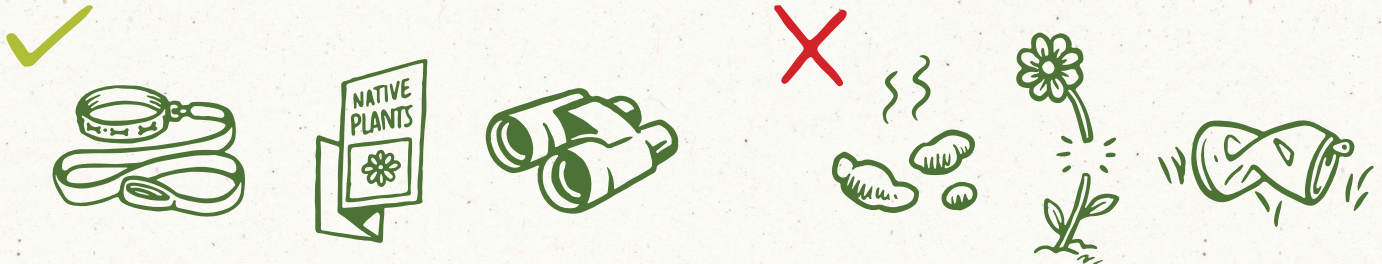
Reduce impact in your neighborhood

- Avoid dumping yard waste beyond your property.
- It is illegal to cut or harm trees or vegetation beyond your property. Contact the city if you are concerned that trees growing on public property are a hazard.
- Damage to trees not on your property could result in legal action.
- Remember that natural areas within a neighborhood are often city property even if they are not signed. Verify ownership before altering trees or vegetation.



Be kind in natural areas

- Stay on official trails and avoid creating new ones.
- Keep dogs on a leash (unless at a designated dog park).
- Clean up after your dog.
- Pick up litter.
- Respect vegetation: avoid picking, removing, or stepping on trees and plants.
- Respect local wildlife and do not chase wild animals.
- Volunteer at a work party.



LOVE YOUR NATURAL AREAS?

Volunteer with the Green Snoqualmie Partnership to steward Snoqualmie's public green spaces.
Go to the Green Snoqualmie Partnership website to find an event near you.



PHOTO: JIM AVERY



FORTERRA



King County



SNOQUALMIE RIDGE
RESIDENTIAL OWNERS ASSOCIATION

www.greensnoqualmie.org

info@greensnoqualmie.org

GREEN
SNOQUALMIE
PARTNERSHIP