



## Community Restoration Grants – Frequently Asked Questions

**Q: Can I apply if my organization only does educational activities?**

**A:** We require hands-on restoration work for a project to be funded.

**Q: How do you define ‘Community Lands’?**

**A:** The neighborhoods, towns, and developed areas where people live and work

**Q: We want to request funding for multiple grant sites. Should we submit multiple grant applications?**

**A:** Each organization is only eligible to receive funding once per calendar year, and we allow multiple project sites to be on one grant application. However, both sites should be part of the same project.

**Example:** Forterra could submit one application requesting \$10,000 to fund "Forterra Fridays" events held at both Duwamish Hill Preserve and Crystal Springs Park. However, they could not split that \$10,000 between two separate programs. For example, \$5,000 for "Trees for Field Partners" and \$5,000 for "Forterra Fridays." Since those are distinct programs, not a single project with multiple sites.

**Q: What is the maximum and minimum amount of funding I can request in an application?**

**A:** Our target amount is \$10,000-\$25,000. An applicant cannot receive over \$25,000. We are open to projects that ask for less than \$10,000 in funding. Even though there are multiple rounds, each organization is only eligible to receive funding once per calendar year.

**Q: I applied for funding in the past. Can I apply again?**

**A:** Yes. Applicants can apply for multiple rounds but can only receive a funding award once per calendar year. At the same time, we are unable to consistently fill a financial gap for the same project for multiple years, and we would encourage you to look for funding in multiple places.

**Q: Is my project a good fit?**

**A:** We're happy to tell you if it checks the basic boxes – email us at [Restoration@Forterra.org](mailto:Restoration@Forterra.org) . *However, just because a project meets the basic criteria does*

***not ensure project funding.*** We heavily prioritize projects working with youth in unique ways. To see the types of projects we have funded we recommend reviewing the recent Community Restoration Grant winners at the bottom of [this](#) webpage. As a reminder, our decision Criteria are:

1. CRG Goals: How well does the project fit with CRG program goals? How many of the seven goals does the project meet?
  - a. Promote community-driven solutions to maximize social and environmental equity.
  - b. Educate the public, especially the next generation, about environmental protection and restoration.
  - c. Instill knowledge about, and promote the use of, native plants in environmental restoration.
  - d. Leverage Forterra's experience and relationships to restore areas that improve environmental and community health.
  - e. Invest in Washington cities with relatively larger BIPOC communities, lower household incomes and greater health disparities.
  - f. Partner with youth organizations and programs which provide job training and career pathways in restoration for BIPOC and other local youth.
  - g. Complement and support ongoing Forterra-developed regional restoration programs.
2. Feasibility: Can this project be completed with the funds requested and be reasonably achieved?
3. Community support: Is there clear support from the community? Does the project clearly identify the needs in the community? How does the project incorporate community feedback and encourage participation?
4. Impact on Youth: Does this project serve youth? How are youth meaningfully impacted and engaged by the program?
5. Community impact/need: What is this project's anticipated impact? Does this meet the needs of the neighborhood/community using this space? Are there success indicators for this project?
  - a. How does this project work with underserved communities?
  - b. Does the project Invest in Washington cities with relatively larger BIPOC communities, lower household incomes and greater health disparities?
6. Project longevity: Is this project likely to result in lasting change? What maintenance is required for outcomes to be sustainable?

**Q: I am a lead volunteer working at a park and have a project in mind. Can I still apply?**

**A:** Applicants must be a 501(c)3 organization, fiscally sponsored by a 501(c)3, or a Tribal entity within Washington state. Individuals or for-profit entities are not eligible to be a lead applicant. Individuals or for-profit entities must partner with or be fiscally sponsored by a 501(c)3 or Tribal entity.

**Q: I am a for-profit company working at a park and have a project in mind. Can I still apply?**

**A:** Applicants must be a 501(c)3 organization, fiscally sponsored by a 501(c)3, or a Tribal entity within Washington state. Individuals or for-profit entities are not eligible to be a lead applicant. Individuals or for-profit entities must partner with or be fiscally sponsored by a 501(c)3 or Tribal entity.

**Q: How do you define native plants?**

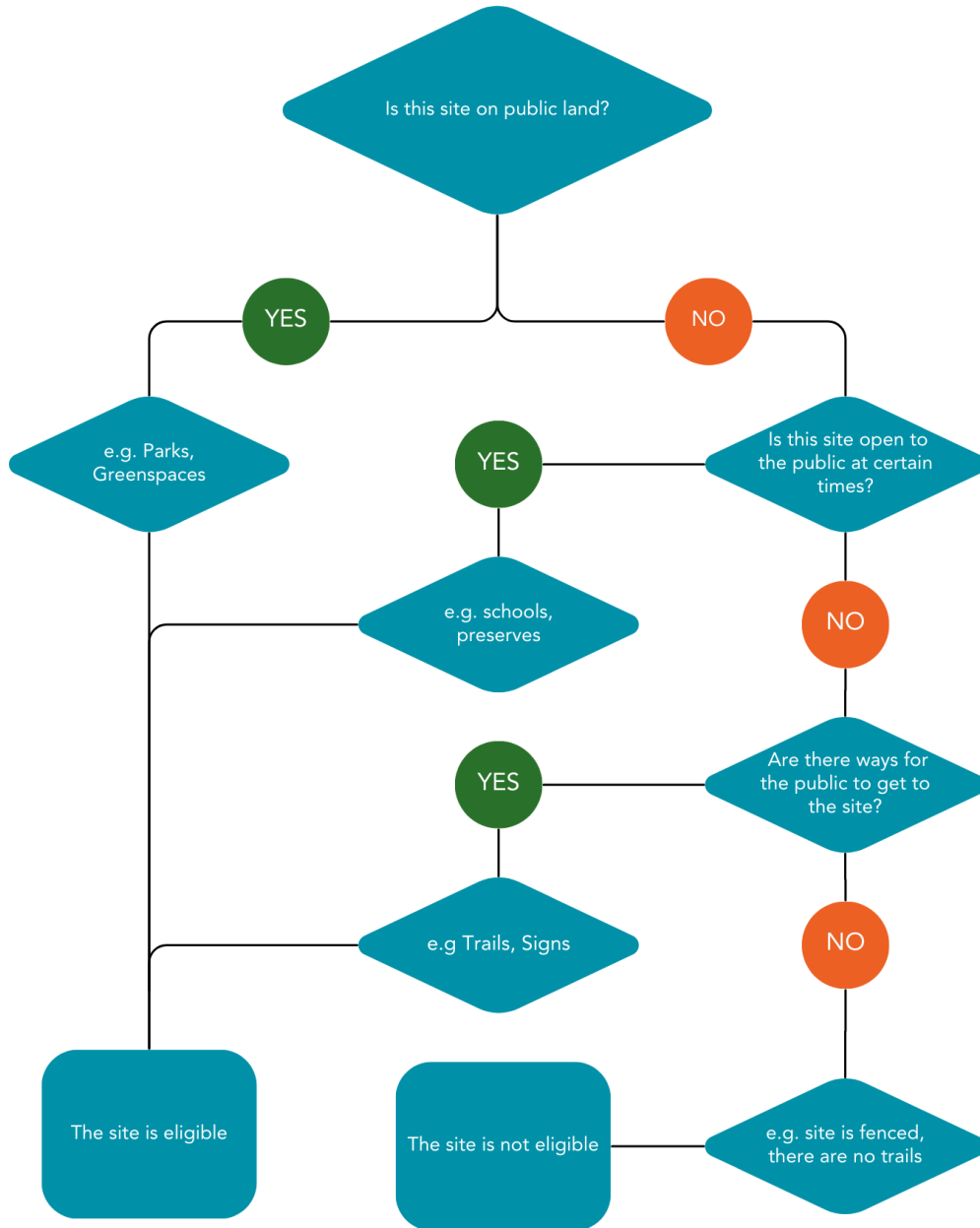
**A:** We rely on the US Forest Service definition, [found here](#). If you have questions about whether a plant is considered native or believe there should be an exception for a plant (such as for climate change reasons), feel free to contact CRG staff.

**Q: My project has areas where we do not use native plants. However, the grant application will fund a section dedicated exclusively to native plants. Am I still eligible?**

**A:** Yes.

**Q: How do I know if my site is considered publicly accessible?**

**A:** Accessibility is defined in a few different ways. Please view the flow chart below to see if your site is considered publicly accessible. If you still aren't sure, you are encouraged to reach out to CRG staff.



**Q: What if I am worried I will not be able to complete my project on time?**

**A:** We will prioritize projects that can be completed within the required grant time frame, which is approximately one year (it differs depending on the grant round; please be sure to confirm your time frame based on the round you are applying for). We are aware that sometimes circumstances change, and we are willing to discuss extension dates on a case-by-case basis.

**Q: Can I apply if my organization is national or multi-state, but does work in Washington?**

**A:** If your organization is registered to do business in Washington and all the funds go to a community-based Washington project, you are eligible to apply. We ask for confirmation that no funds would be spent outside of Washington, that could mean you'd be restricted for admin funding, so please keep that in mind.

**Q: Can I apply if my organization is a government entity?**

**A:** Tribal governments, schools and school associations are eligible. No other government and quasi-government agencies may apply.

**If you don't see your questions answered here, please contact us at [restoration@forterra.org](mailto:restoration@forterra.org).**